

XCG-Software Install Guide

XCG-U100CR

XCG-5005CR

Index

1. Getting Started

- 1.1. NIC
- 1.2. Network Settings
 - 1.2.1. Enable jumbo frame
 - 1.2.2. IP Address
 - 1.2.3. DHCP
 - 1.2.4. Persistent IP
 - 1.2.5. Windows Firewall

2. XCG-Software Installation

- 2.1. Install
- 2.2. Uninstall

3. Confirm IP Address

- 3.1. IPConfigTool
- 3.2. Confirm IP Address

4. Execute XCG-Software

- 4.1. Execute XCG-Software
- 4.2. Display image
- 4.3. Control the camera

1. Getting Started

1.1. NIC

Before installing the XCG-Software, insert the Network Interface Card(NIC) and install the network driver.

This camera doesn't work with 100BaseT interface.

The IntelPRO/1000® series with PCI-e interface is recommended.

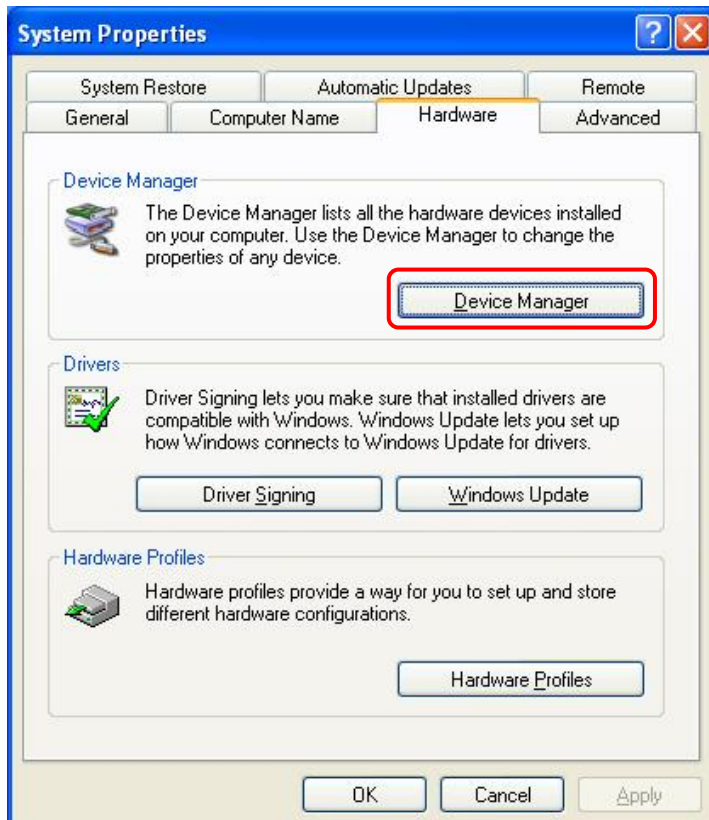
1.2. Network Setting

When you use Windows Vista or Windows7, disable UAC.

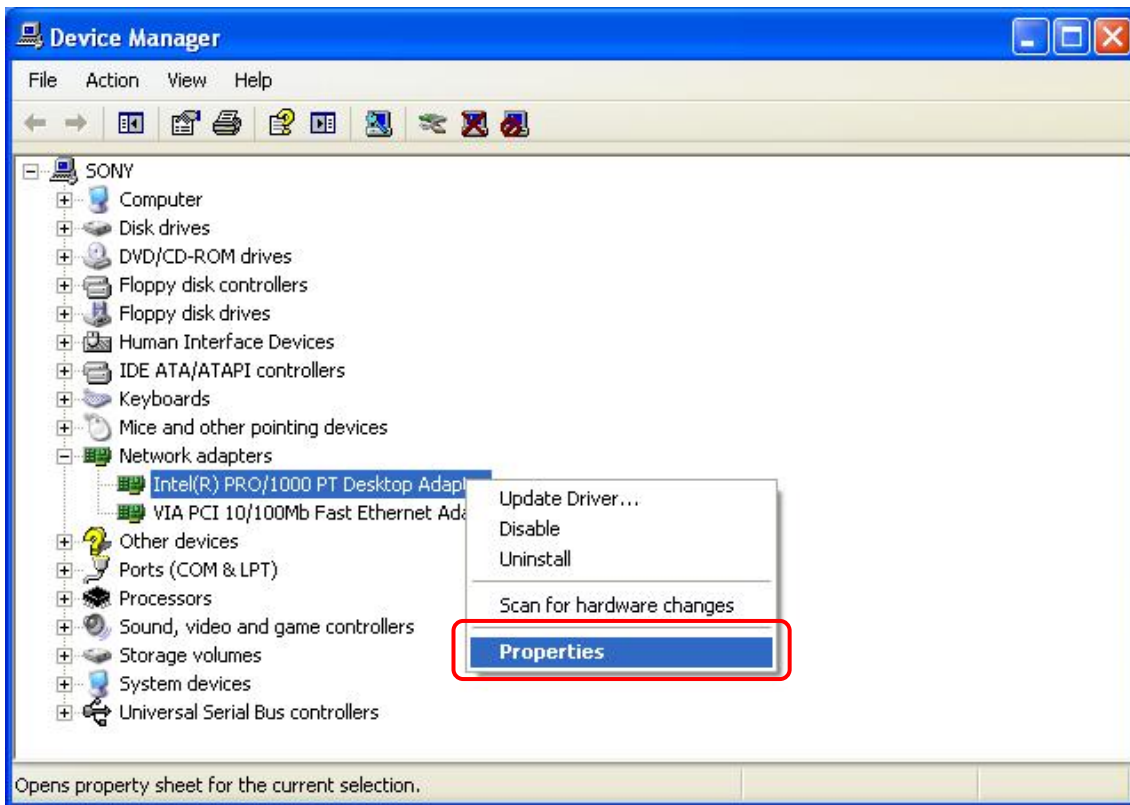


1.2.1. Enable jumbo frame

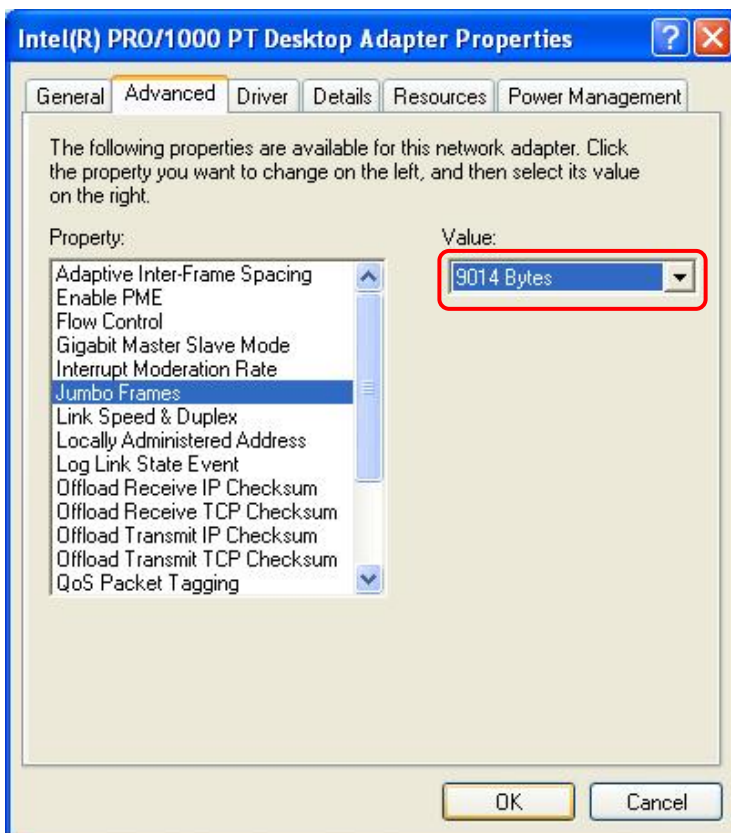
Open the device manager.



Select the NIC and open properties.



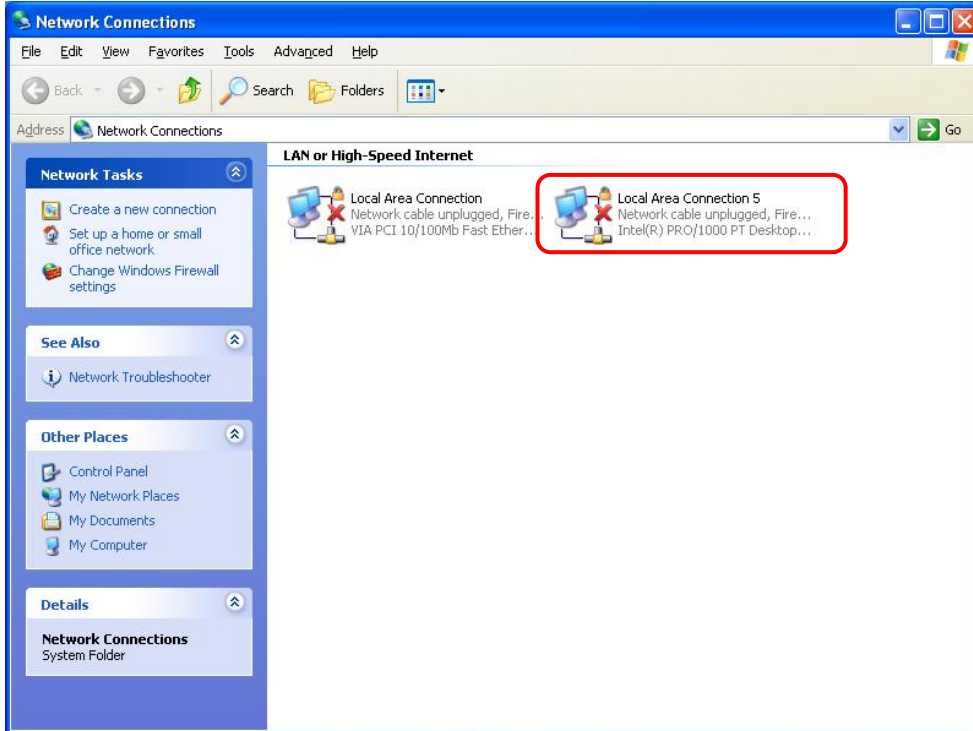
Open the “Advanced” tab and select “Jumbo Frames” property. Select maximum size for jumbo frame.



Close the device manager.

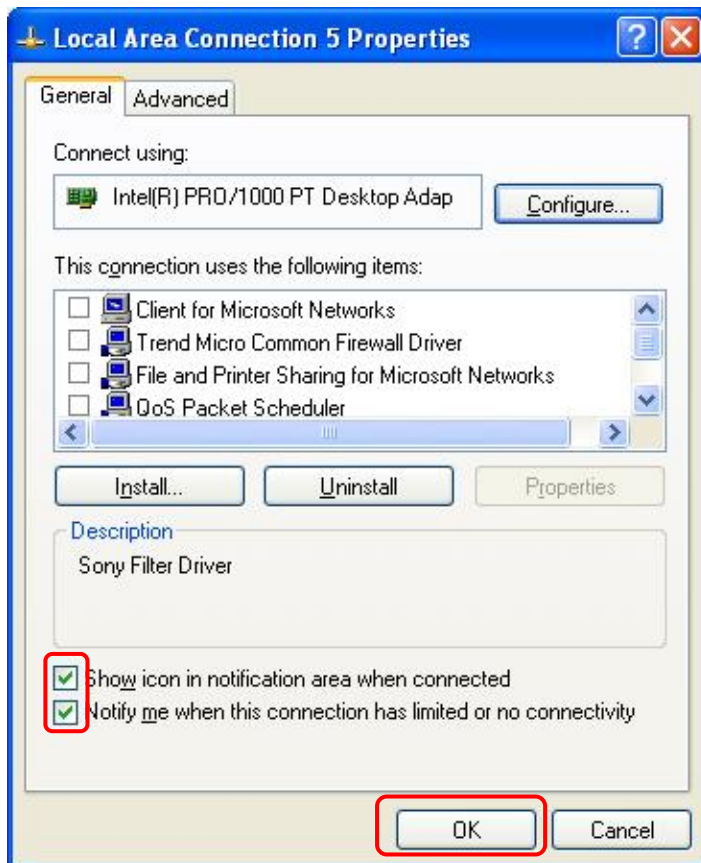
1.2.2. IP Address

Open “Network connections” in the control panel, select the adaptor and open the property.

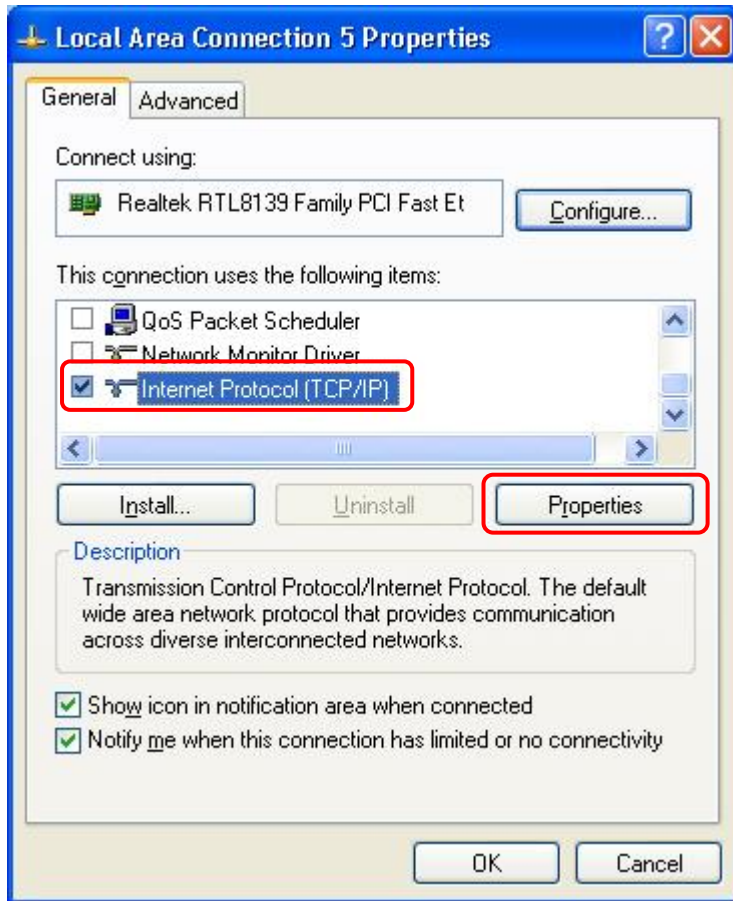


Check four items below, and uncheck others.

- Internet Protocol(TCP/IP)
- Show icon in notification area when connected
- Notify me when this connection has limited or no connectivity



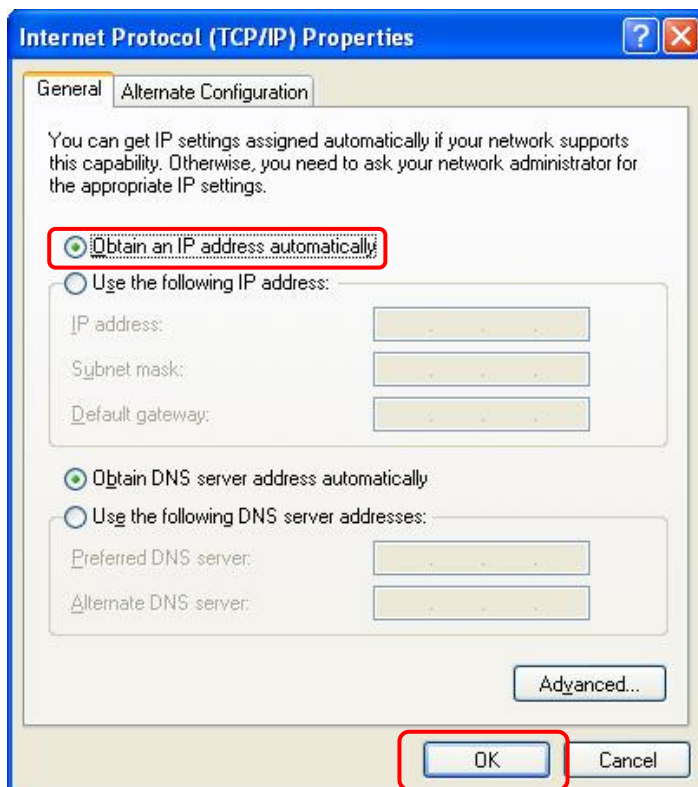
Select "Internet Protocol" and click "Properties".



1.2.3. DHCP (recommended)

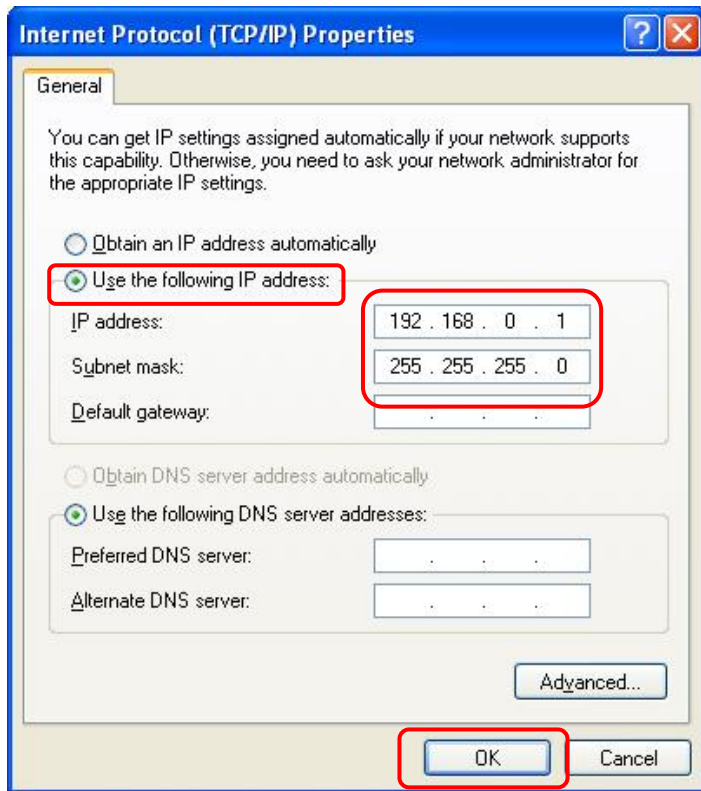
Select [Obtain an IP address automatically].

Normally there is no DHCP server on your PC, so it takes one minute to timeout. Then the Link Local Address (LLA) is assigned to this NIC.



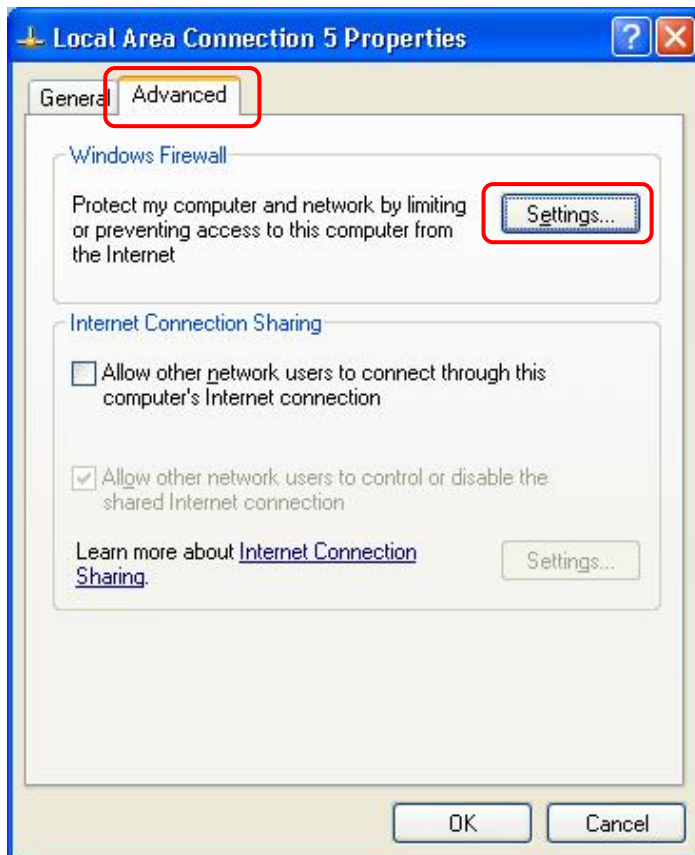
1.2.4. Persistent IP

If you want to use the persistent IP address, select [Use the following IP address], and enter the IP address and the Subnet mask as you like.

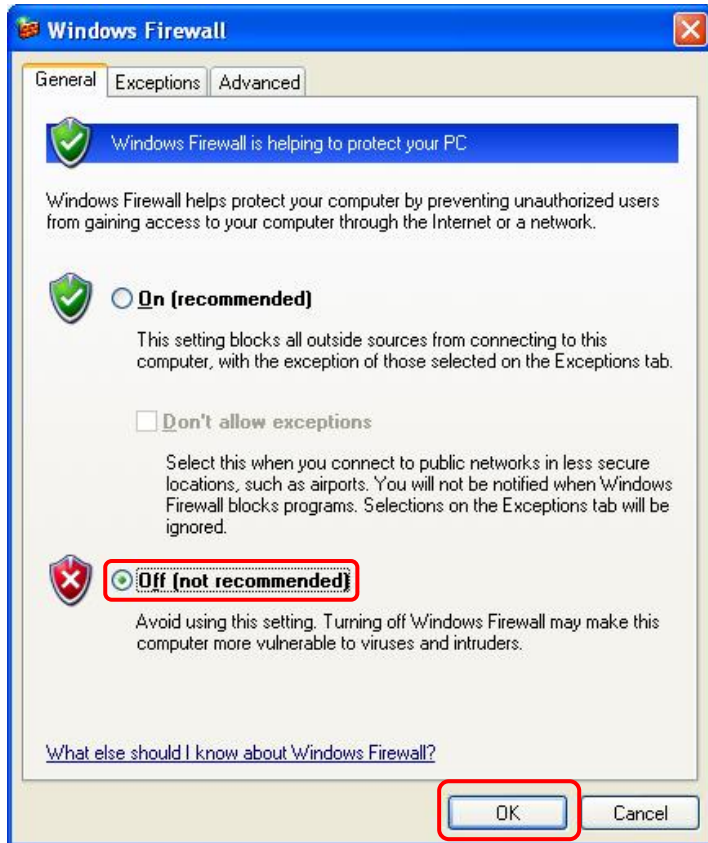


1.2.5. Windows firewall

Open the “Advanced” tab in the “Local Area Connection”, and click “Settings” of Windows Firewall.



Select "Off" in the "General" tab. If you have the third party's security software, disable the firewall.



In the "Local Area Connection", click "OK".



The preparation for the installation is completed.

2. XCG-Software Installation

XCG-Software is installed.

2.1. Install

Download the “XCG-Software” and unzip it.

Run “Setup.exe” in the unzipped folder.

Choose the language. Currently “Japanese” and “English” are available.



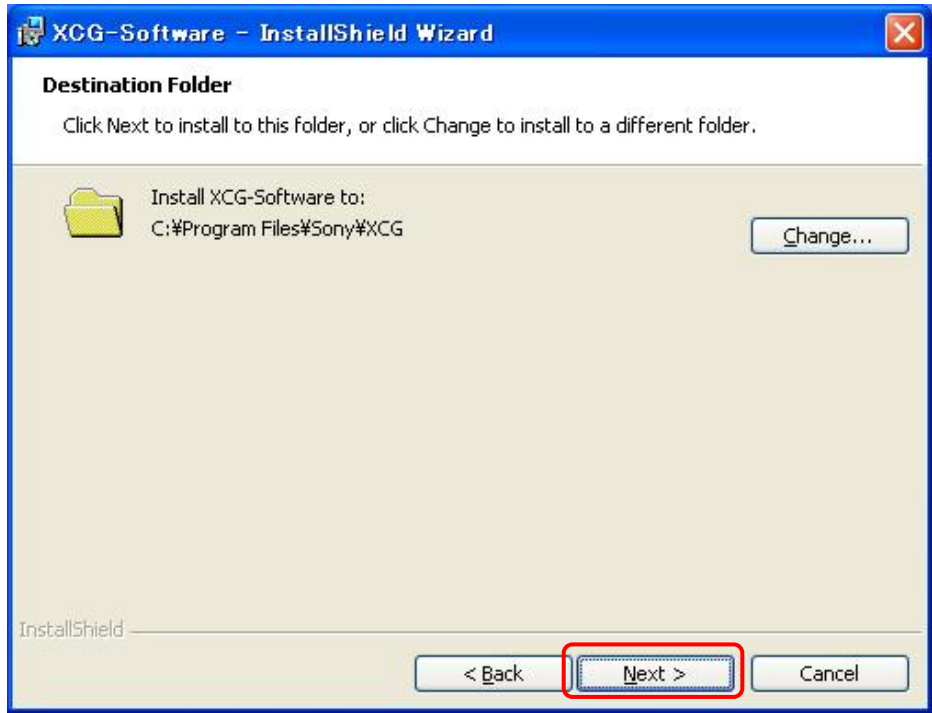
Click “Next”.



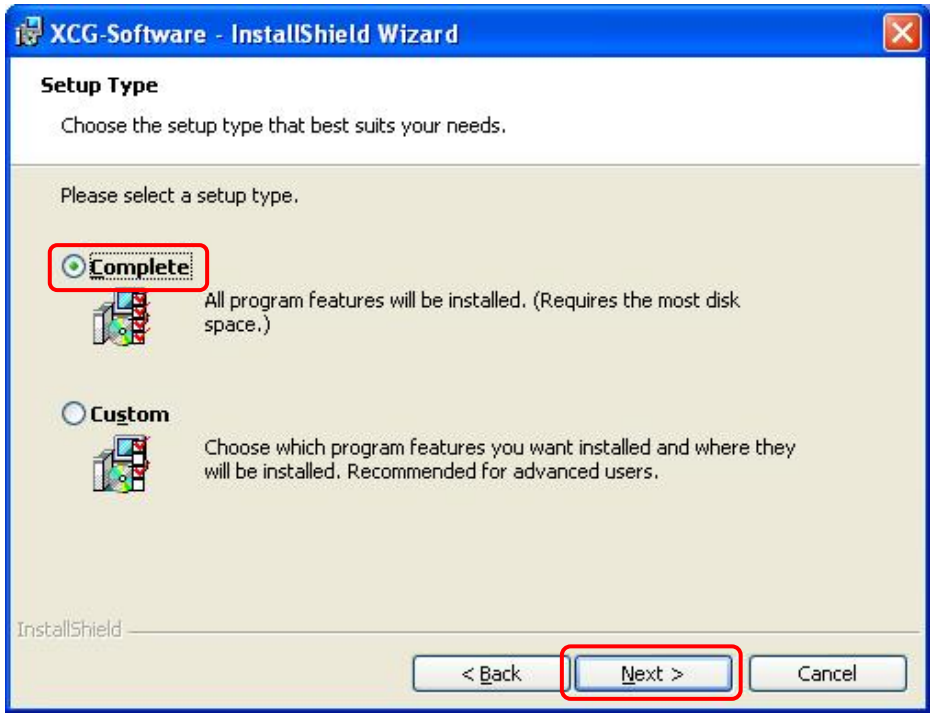
Read the “License Agreement” statement.
Select “I accept the terms in the license agreement”.
Click “Next”.



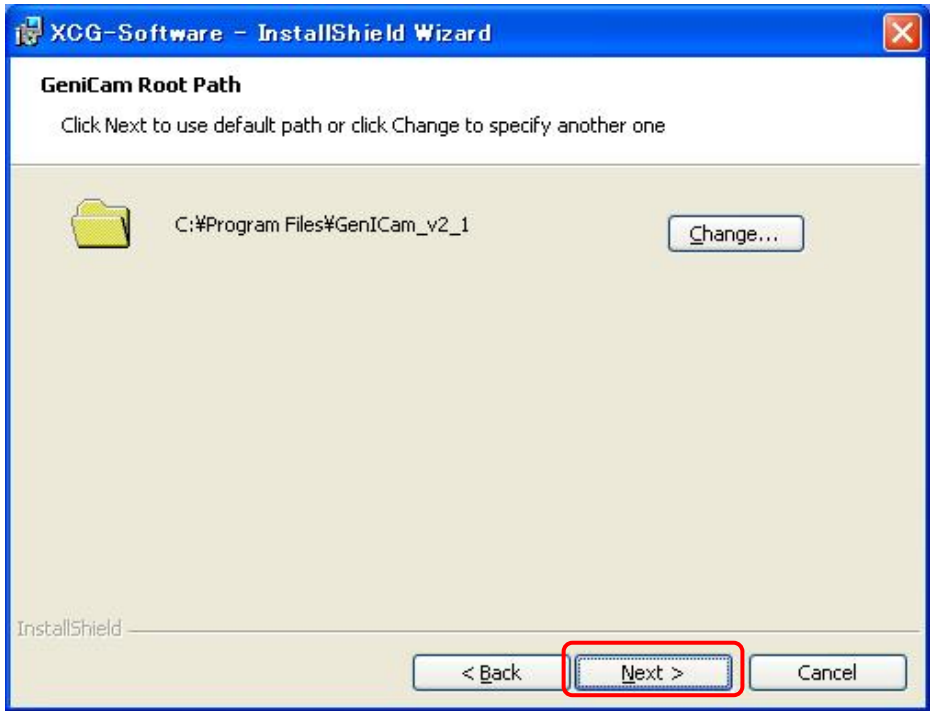
Click “Next”. You can change the install folder here.



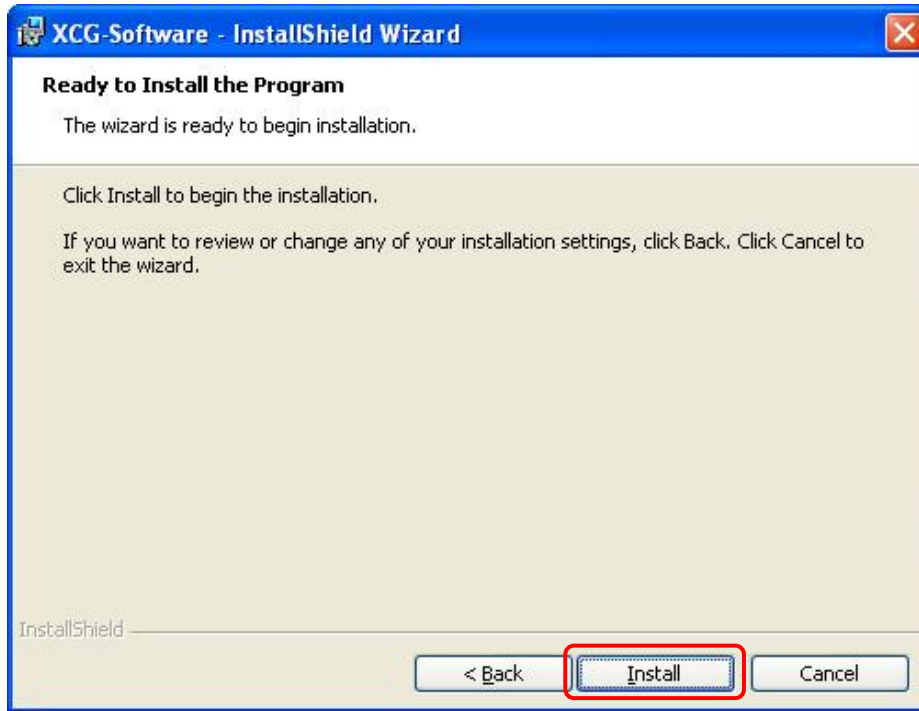
Select "Complete" and click "Next".
You can also select "Custom" menu.



Click "Next". You can change the GeniCam install folder here.



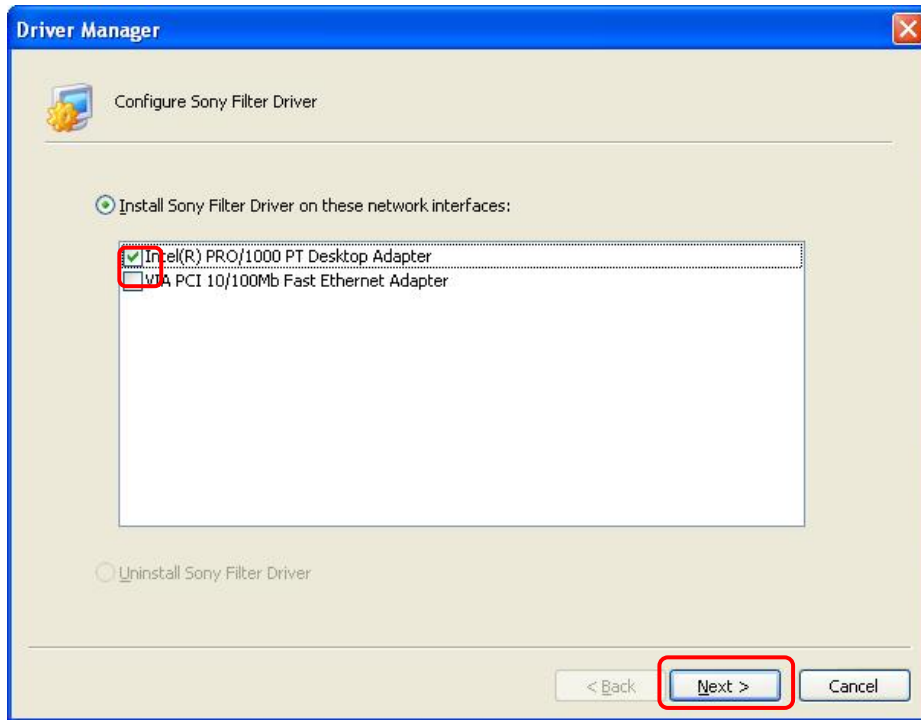
Click "Install".



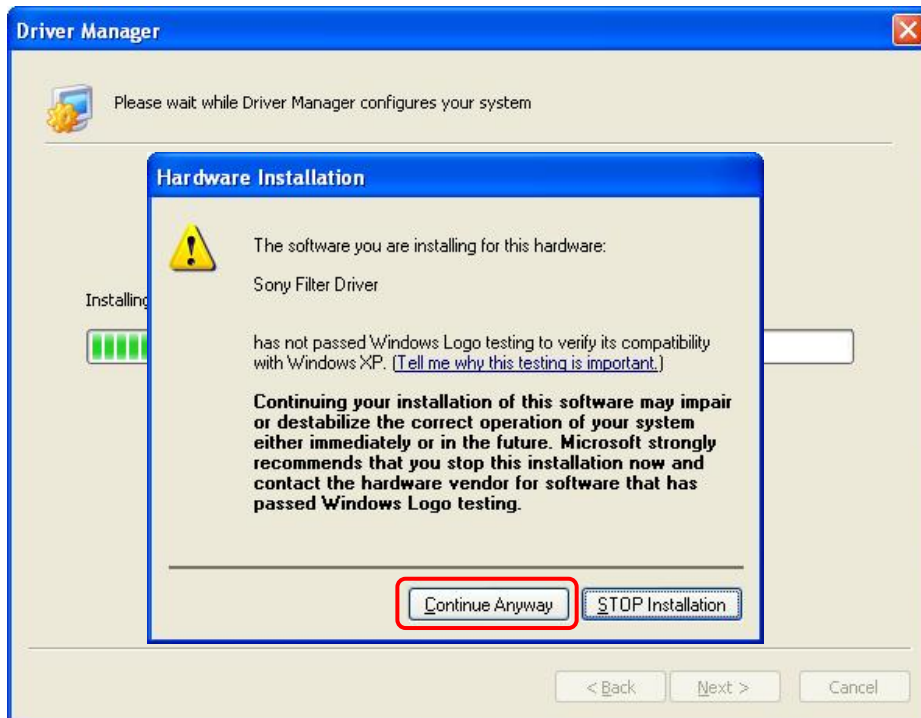
Installation is started.



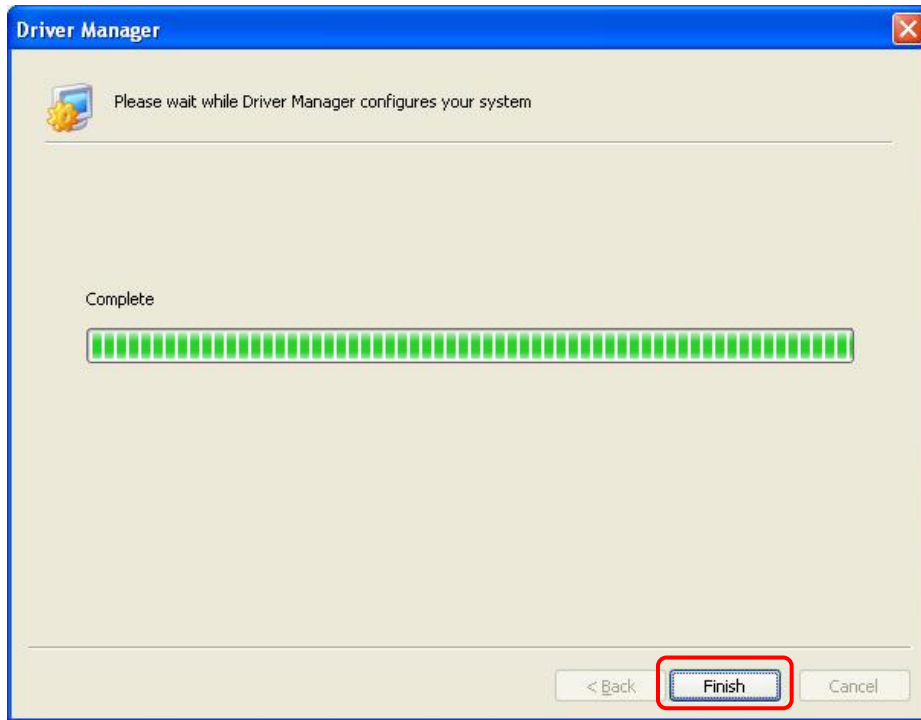
Select the NIC which you want to use XCG-Software, and click “Next”.



You will see the warning messages several times, but click “Continue Anyway” to ignore.



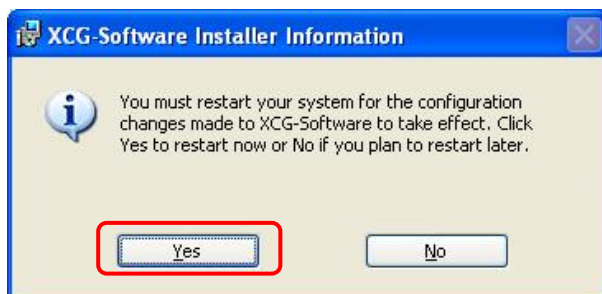
Click "Finish".



Click "Finish".



Click "Yes" to restart the PC.



3. Confirm IP Address

Connect the camera to the PC. Turn on the camera.

If you select “Obtain an IP address automatically”, it takes one minute to set the IP address.

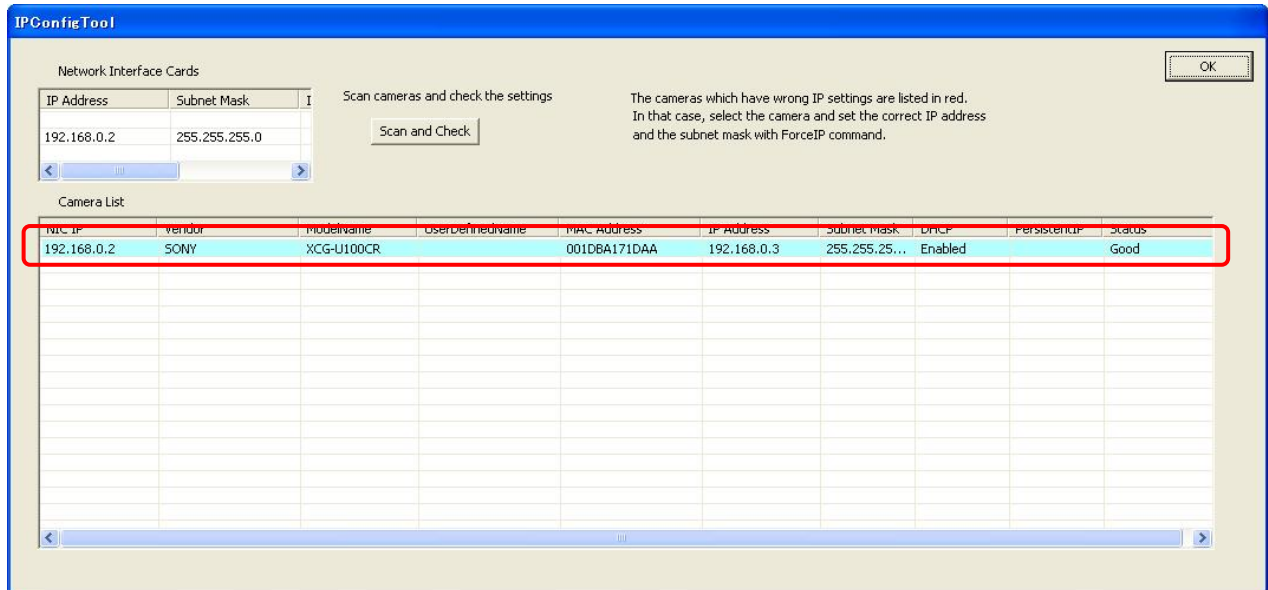
You can check the status on the task bar.

3.1. IPConfigTool

Run the “IPConfigTool”. It is located in the “Start Menu” > “Sony” > “XCG” > “XCG-Software”.

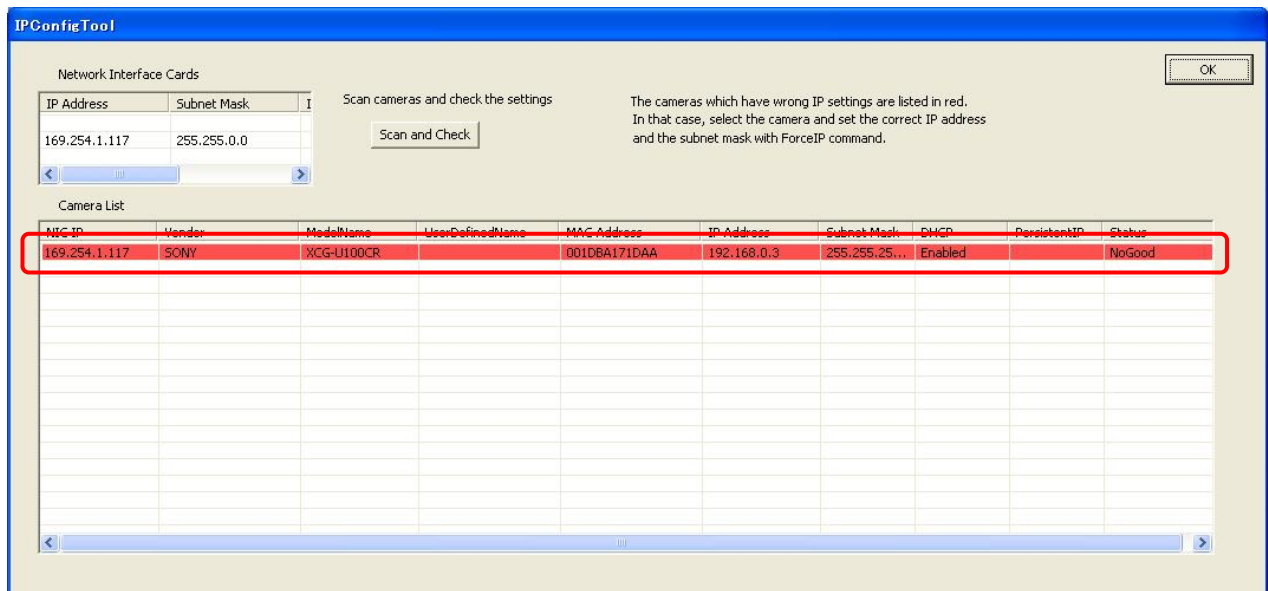
3.2. Confirm IP Address

You will see the camera in the Camera List. If it is listed in light blue, the IP configuration is done successfully.

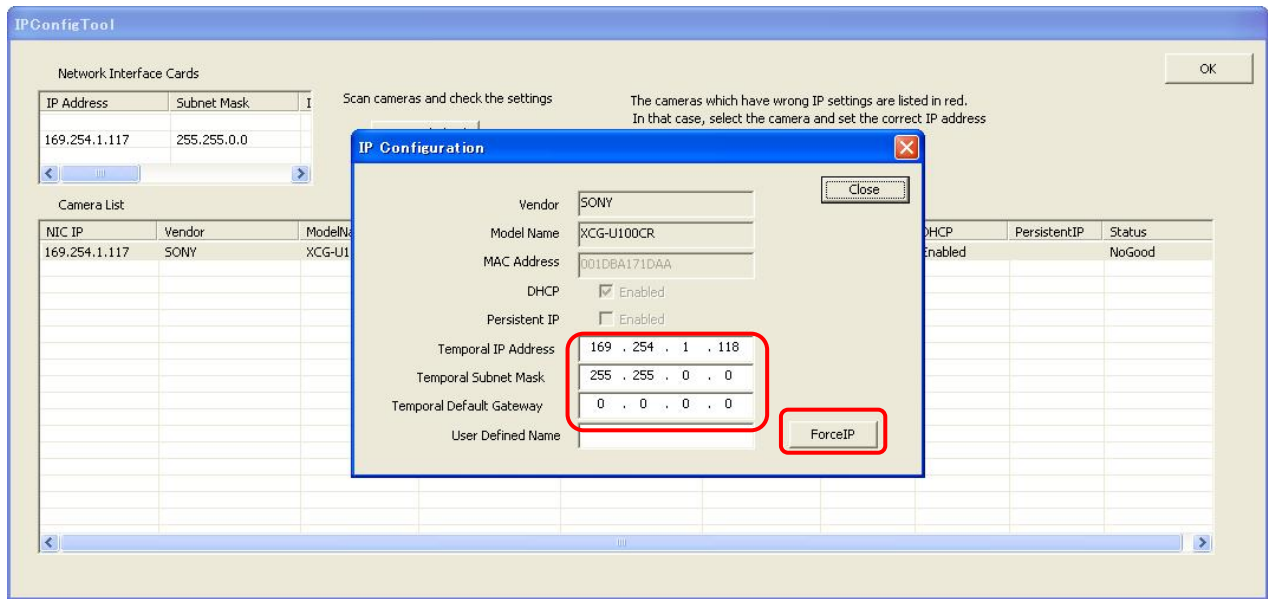


If it is listed in red, the IP address is set with the different IP segment.

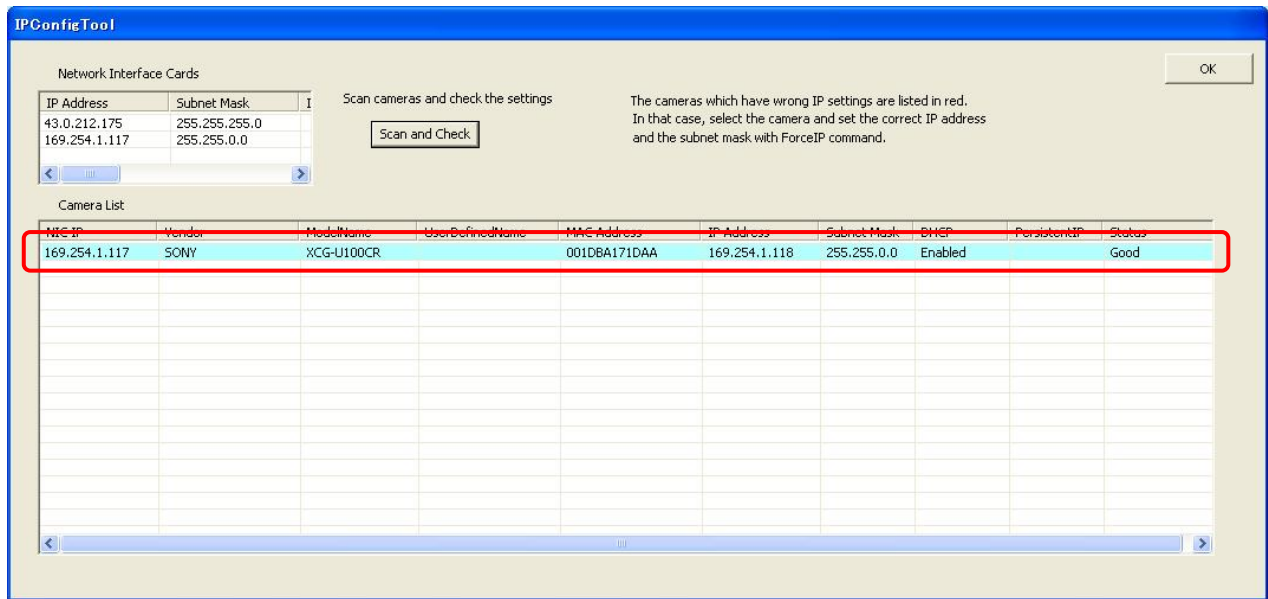
In this case, you can set the IP address manually with the “Force IP” command.



Click the camera on the list, then “IP Configuration” dialog will popup.
 Confirm the “Temporal IP Address” is not used by the other devices, and click “ForceIP” .
 Click “Close”.

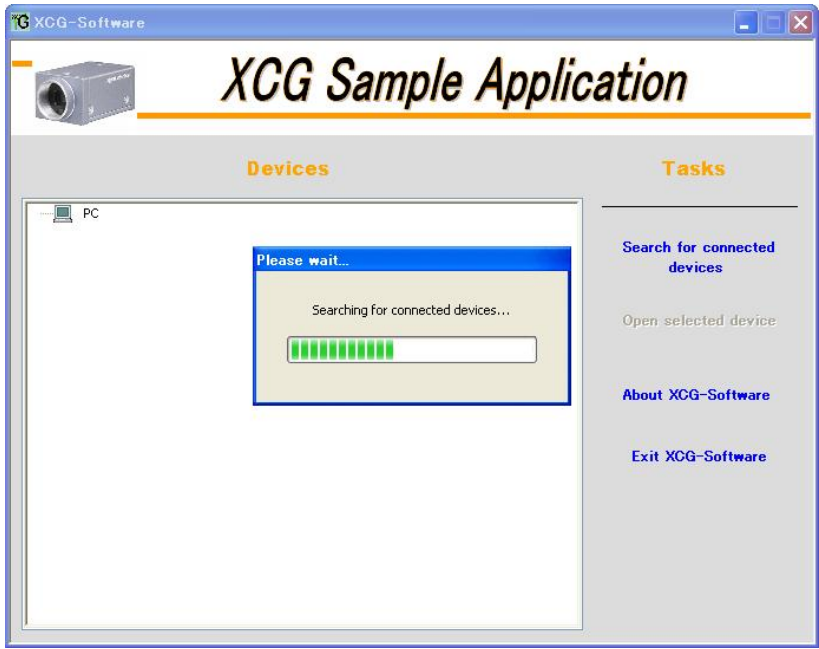


The list will be refreshed and confirm that the camera is listed in light blue.

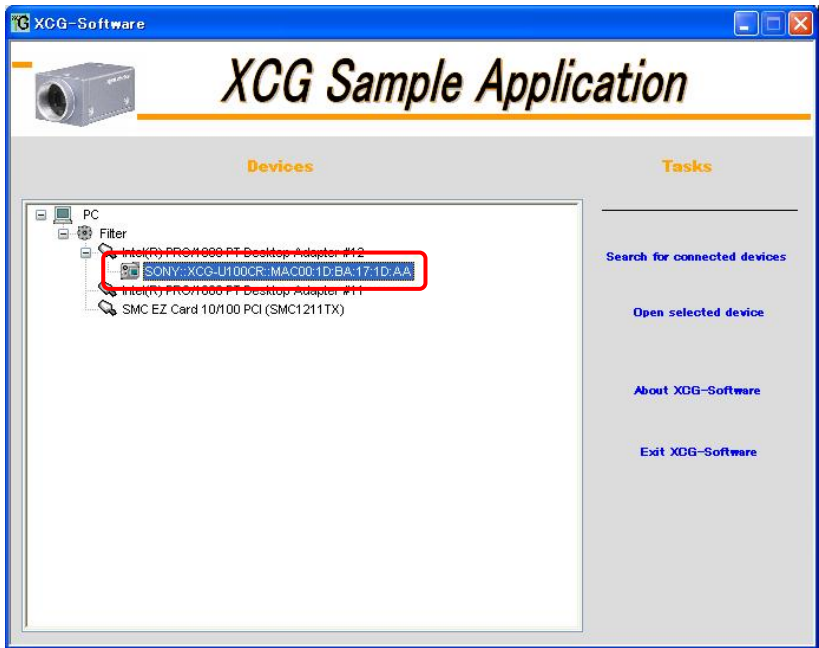


4.1. Execute XCG-Software

Run the "XCG-Software".

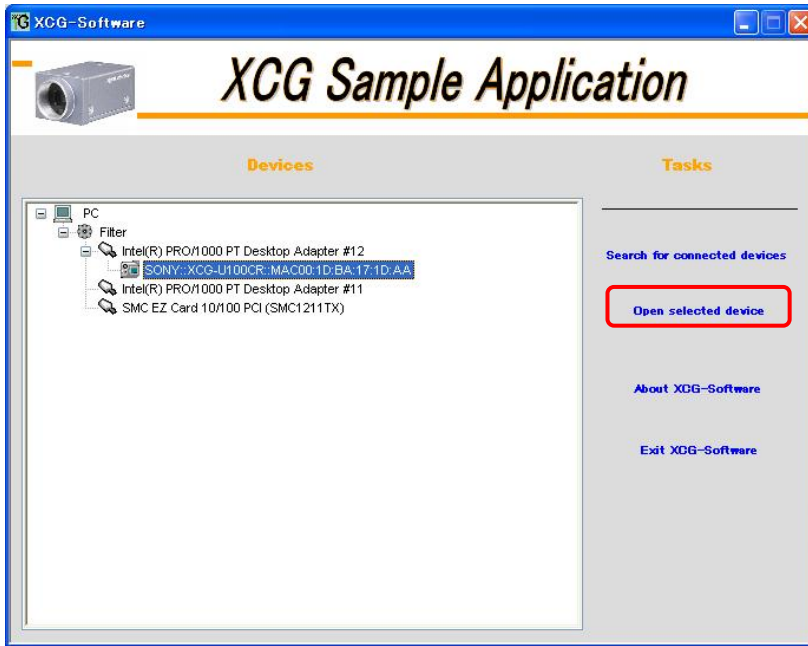


The camera will be shown in the device tree.

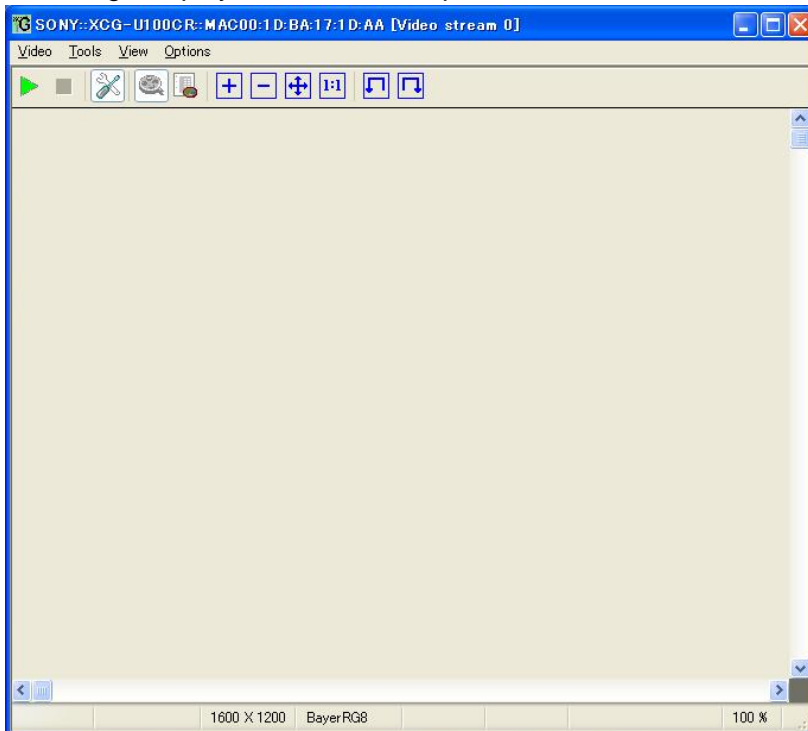



4.2. Display image

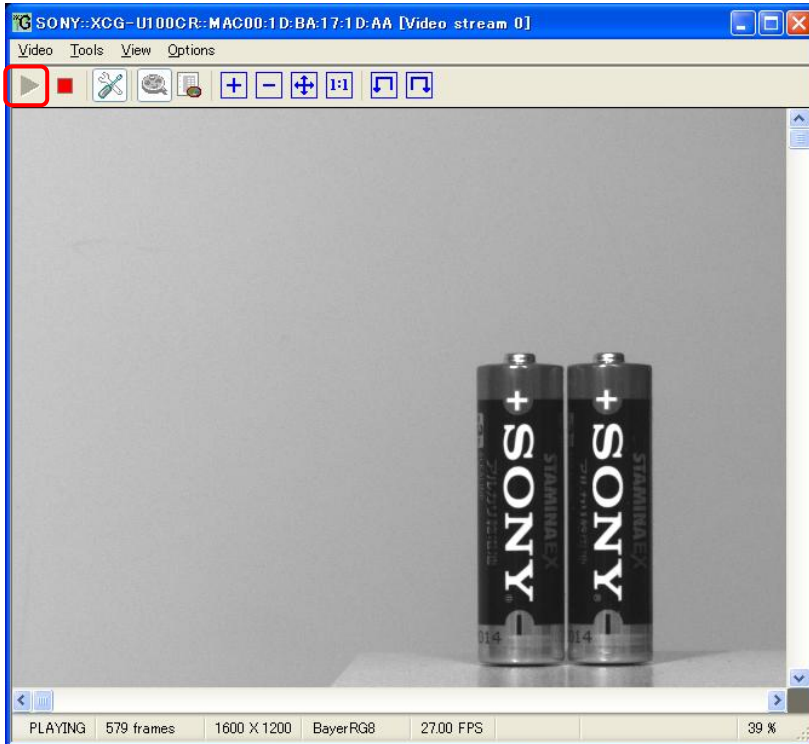
Click “Open selected device”



The image display window will be open.



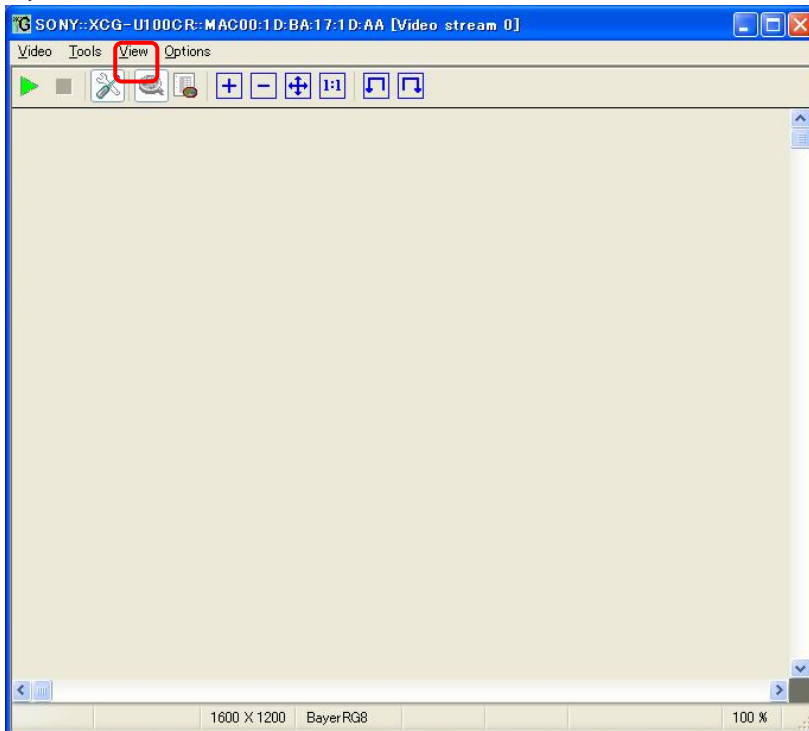
Click  button to start acquisition.



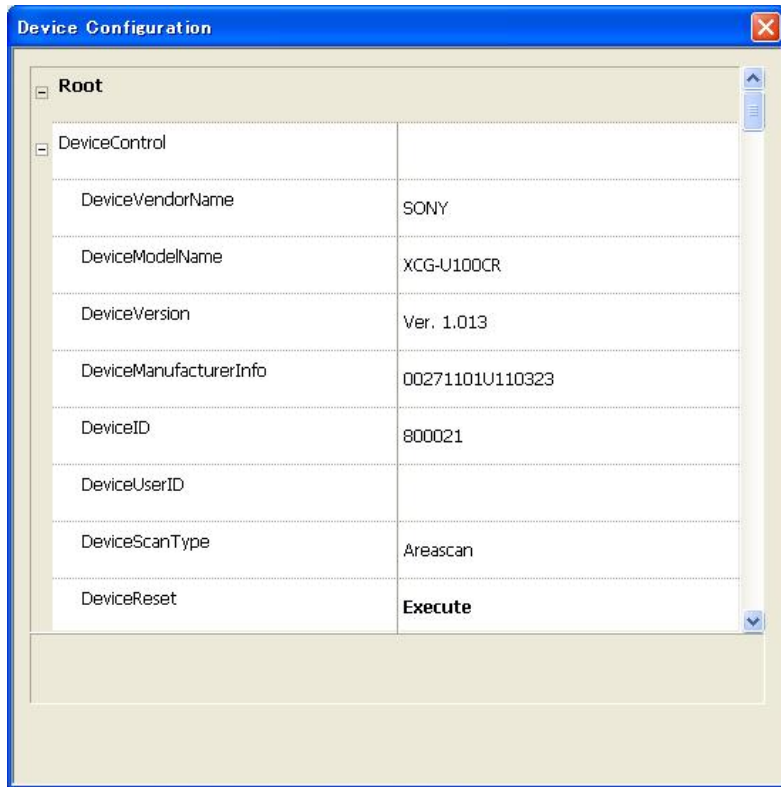
Click  to stop acquisition.

4.3. Control the camera

Open "Device Parameters" in the "View" menu.



You can change the camera parameters in this dialog.



Please refer to the “XCG-Software assistant guide” in detail.