

Lightning

PCI Video Frame Grabbers

Multi-Channel, PCI Bus, Wavelet Video Compression Board

Lightning is a low-cost, PCI bus video capture and compression engine that combines the capabilities of fast switching, digital recording, and viewing of video from up to 16 cameras. Video can be switched, controlled, digitized, stored, recorded, and played back in a variety of flexible options.

Integral Technologies

Integral Technologies, based in Indianapolis, Indiana, provides powerful, affordable, high-performance digital surveillance solutions. As a pioneer and world leader in digital video imaging, Integral Technologies continues to meet the unique needs of the security industry with products designed to make surveillance systems easy to implement and even easier to use. For more information on the complete line of digital surveillance products from Integral Technologies, visit our Web site at www.integraltech.com.

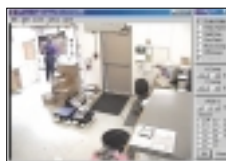
Key Features

Following are key features provided by the Lightning video frame grabber. For a detailed list of performance features, please see other side of this sheet.

- Multi-channel wavelet video compression board
- Compression ratios from 8:1 to 200:1
- Fast video switching
- 16 video inputs: composite, NTSC, PAL
- Software compression and playback
- 16 alarm inputs
- 1 alarm output
- Low-cost digital CCTV and time-lapse recording
- Installs into any Intel-based PCI system
- Software Developers Kit for Windows 95, 98, 2000, ME and NT
- Easy to install, Microsoft Plug and Play
- FCC and CE Approved

Applications

Includes XLG, LightView, and XVCR applications, shown below left to right.



9855 Crosspoint Blvd., Suite 126 | Indianapolis, IN 46256 USA

PH: +1-317-845-9242 | FAX: +1-317-845-9275 | E-mail: info@integraltech.com

Visit our Web site at www.integraltech.com

16 Camera Inputs

Configure and switch up to 16 cameras with Lightning. Any combination of color or monochrome cameras can be configured. Supports both NTSC and PAL standards.

High-Quality Software Wavelet Video Compression

Lightning supports wavelet video compression in software, which offers improved quality at high compression rates.

Programmable Control

Lightning provides programmable control to trigger video surveillance on alarm or event, to initiate a preprogrammed video sequence or to control manual video observation.

Activity Detection

Activity detection prioritizes and controls the rate of camera sequence recording, viewing and digital capture by responding to movement.

Alarm Triggers

Up to 16 input triggers provide alarm or event verification for each camera assigned to a trigger. Triggers can be activated by a variety of input devices, including sensors, motion detectors, proximity switches and contact closures. Triggers can be configured to control the preferred video display option, digitally capture and save the video image, and activate external events. An output trigger provides activation of audio or visual alarms or time-lapse recording.

Capturing, Storing and Printing Images

Lightning also is a full-featured PCI frame grabber. Full-color or monochrome video images can be digitally captured and saved in your PC in a variety of file formats, including BMP, TIFF, JPEG and more. Images can be copied into MS Windows applications, included in reports and printed.

Extensive Software Support

Lightning comes with full support for MS Windows 2000, ME, 98, 95, and NT. Included software allows for full control of capture, compression and playback of all 16 video inputs. An optional Software Developers Kit offers developers and integrators the flexibility to develop custom applications.

Full Compatibility

Lightning is fully compatible with the latest generation of Pentium III computers.

Cost Effective

Lightning turns your computer into a powerful CCTV surveillance system or digital time-lapse recorder for an exceptionally low cost. Lightning protects the investment of existing surveillance systems by using most of their components, including cameras, monitors and cables.

Multi-Channel, PCI Bus, Wavelet Video Compression Board

Lightning Overview

- PCI bus mastering capture board
- PCI bus rev 2.1 compliant

Video Input

- 16 composite inputs
- NTSC or PAL, software selectable
- CCIR 601 digitizing resolution
- Color and monochrome
- Genlocks to any NTSC/PAL video source
- Software control of brightness, contrast, hue and saturation
- 24/16/15 bpp RGB or YUV 4:2:2 color digitization

I/O Triggers and Controls

- 16 input triggers — software definable combination of Normally Open or Normally Closed
- 1 TTL output trigger

Video Compression & Playback

- Software wavelet compression ratios from 8:1 to 200:1
- Software selectable compression ratios and frame rate for each input channel
- Variable compression ratio for specific video inputs based on triggered events and motion detection
- Fast random access to the recorded video
- Variable video playback rates (forward/backward)
- Supports any digital storage media

Software Included

- MS Windows 95, 98, 2000, ME and NT drivers
- XLG video capture and I/O control application
- XVC digital video compression application
- LightView multi-camera, multi-board viewer

Software Developers Kit (optional)

- MS Windows 95, 98, 2000, ME and NT DLLs
- Extensive sample applications and source code
- XLG application source code
- XVC application source code

Physical and Environmental Parameters

- Small form factor — 140mm x 107mm
- Low power consumption: 5.6W — 640 mA (5V), 200 mA (12V)
- Operating temperature: 0° C to 70° C
- CE and FCC approved

Ordering Information

- Lightning — part #3318
- Lightning Software Developer Kit — part #3465

Cabling

- Wide variety of standard and custom cables available