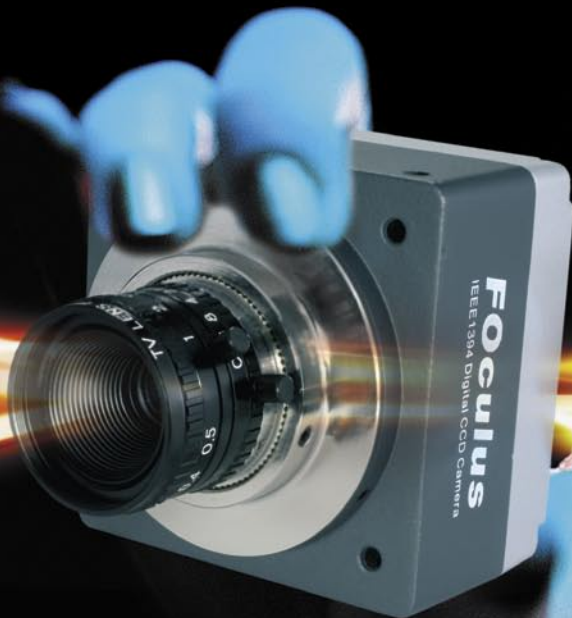


# FOculus

*Always a new perspective*



# FO430B/C

**FO430B/C**

[www.net-gmbh.com](http://www.net-gmbh.com)

## **IEEE1394 Digital CCD Camera**

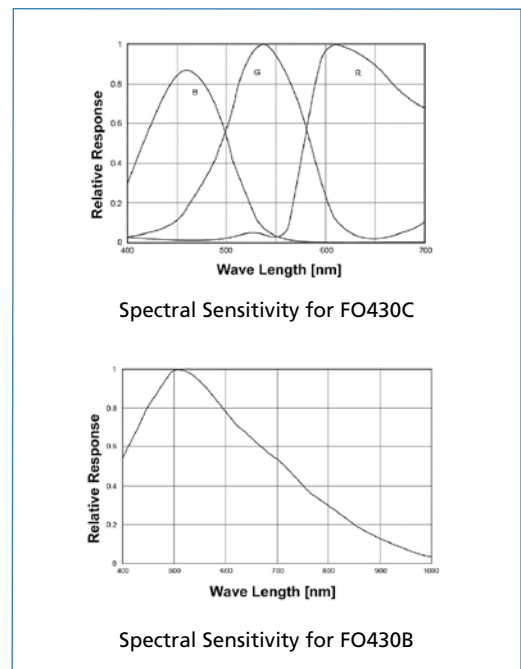
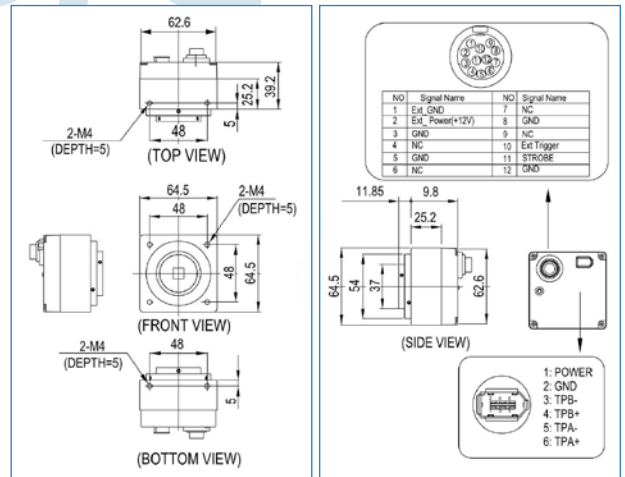
- *1/2" Progressive Scan CCD Image Sensor*
- *Resolution 1,450,000 (square pixel) SXGA*
- *IEEE1394.a acc. IIDC v.1.3 Interface*
- *FO430B =B/W • FO430C =Color*
- *Hard-/Software Trigger*
- *External Trigger*
- *Framerate 7.5fps*
- *Camera setting via IEEE1394 Interface*
- *Solid and highly shock-resistant camera casing*
- *Application:*
  - *Machine Vision*
  - *Factory Automation*
  - *Quality Control*
- *Application Software included*
- *SDK optional*

  
*NEW ELECTRONIC TECHNOLOGY*

# Technical Data

# FO430B/C

	FO430B (B/W)	FO430C (Color)
Image Sensor	1/2" IT CCD ICX205AL	1/2" IT CCD ICX205AK
Effective pixel	1,450,000 pixel, 1392 (H) x 1040 (V) SXGA	
Data path	8bit or 10bit B/W	8bit or 10bit Raw RGB
Pixel size	4.65 (H) x 4.65 (V) $\mu\text{m}$	
Chip size	7.60 (H) x 6.20 (V) mm	
Scanning System	Progressive Scan	
Frame rate	7.5 / 3.75 / 1.875 fps	
Synchronization	Internal	
Digital Interface	IEEE1394a	
Software Interf.	Acc. IIDC v. 1.3	
Gain control	0 ~ 27 dB	0 ~ 25 dB
Gamma	1.0	
Strobe output	Option	
RS-232C Comm.	Option	
S/N ratio	56 dB or better	
Power supply	8 VDC to + 30 VDC via the IEEE1394 cable	
Power consump.	approx 200 mA	
Transfer rate	400 Mbps	
Trigger mode	External Trigger	
Shutter Speed	1 $\mu\text{sec}$ - 65 sec	
Gain adjustment	+/- 6dB	
Lens mount	C-mount	
Dimension	64 (W) x 64 (H) x 60 (D)mm / Approx. 300g	



**Accessories:** • IEEE 1394 cable, 6-pin • SDK (Software Development Kit) • OHCI Card • Tripod Adapter Plate • Trigger Cable 12-pin

## Contact

**New Electronic Technology**  
Vertriebsgesellschaft mbH  
Lerchenberg 7 • D-86923 Finning

Fon +49 8806 92 34-0  
Fax +49 8806 92 34-77  
info@net-gmbh.com

[www.net-gmbh.com](http://www.net-gmbh.com)

**NET USA, Inc.**  
3037 - 45th Street  
Highland, IN 46322

Fon +1 219 934 90 42  
Fax +1 219 934 90 47  
info@net-usa-inc.com

[www.net-usa-inc.com](http://www.net-usa-inc.com)

**NET**  
NEW ELECTRONIC TECHNOLOGY