

FOculus

Always a new perspective



FO322B/C

FO322B/C

www.net-gmbh.com

IEEE1394 Digital CCD Camera

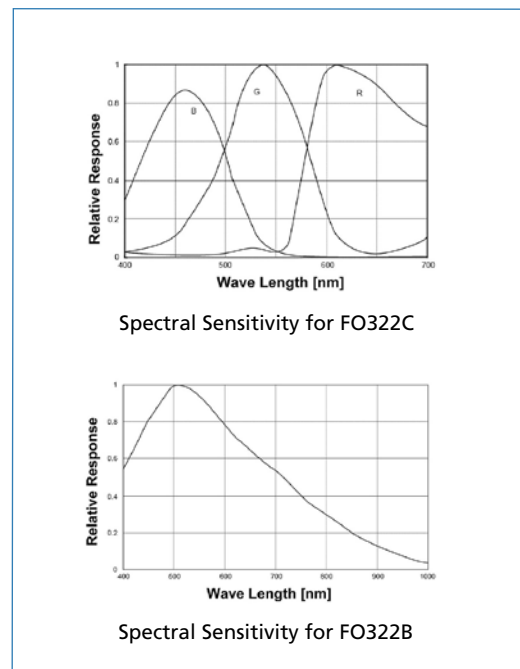
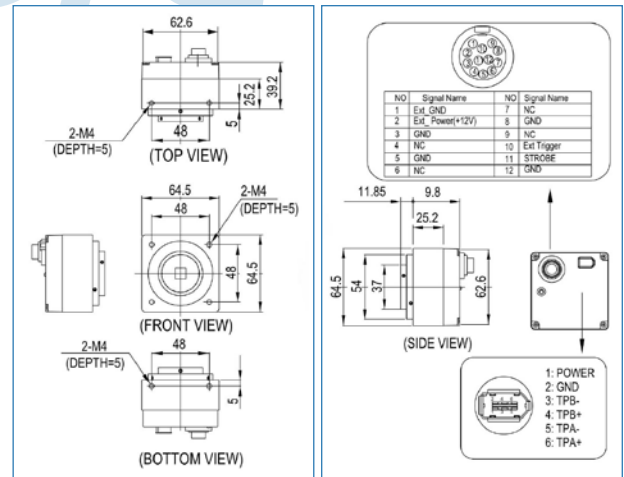
- *1/3" Progressive Scan CCD Image Sensor*
- *Resolution 800,000 (square pixel) XGA*
- *IEEE1394.a acc. I IDC v.1.3 Interface*
- *FO322B =B/W • FO322C =Color*
- *Hard-/Software Trigger*
- *External Trigger*
- *Framerate 15fps*
- *Camera setting via IEEE1394 Interface*
- *Solid and highly shock-resistant camera casing*
- *Application:*
 - *Machine Vision*
 - *Factory Automation*
 - *Quality Control*
- *Application Software included*
- *SDK optional*


NEW ELECTRONIC TECHNOLOGY

Technical Data

FO322B/C

	FO322B (B/W)	FO322C (Color)
Image Sensor	1/3" IT CCD ICX204AL	1/3" IT CCD ICX204AK
Effective pixel	800,000 pixel, 1034 (H) x 779 (V) XGA	
Data path	8bit or 10bit B/W	8bit or 10bit Raw RGB
Pixel size	4.65 (H) x 4.65 (V) μm	
Chip size	5.80 (H) x 4.92 (V) mm	
Scanning System	Progressive Scan	
Frame rate	15 / 7.5 / 3.75 / 1.875 fps	
Synchronization	Internal	
Digital Interface	IEEE1394a	
Software Interf.	Acc. IIDC v. 1.3	
Gain control	0 ~ 27 dB	0 ~ 25 dB
Gamma	1.0	
Strobe output	Option	
RS-232C Comm.	Option	
S/N ratio	56 dB or better	
Power supply	8 VCD to + 30 VCD via IEEE 1394 cable	
Power consump.	approx 200 mA	
Transfer rate	400 Mbps	
Trigger mode	External Trigger	
Shutter Speed	1 μsec - 65 sec	
Gain adjustment	+/- 6dB	
Lens mount	C-mount	
Dimension	64 (W) x 64 (H) x 60 (D)mm / Approx. 300g	



Accessories: • IEEE 1394 cable, 6-pin • SDK (Software Development Kit) • OHCI Card • Tripod Adapter Plate • Trigger Cable 12-pin

Contact

New Electronic Technology
 Vertriebsgesellschaft mbH
 Lerchenberg 7 • D-86923 Finning

Fon +49 8806 92 34-0
 Fax +49 8806 92 34-77
 info@net-gmbh.com

www.net-gmbh.com

NET USA, Inc.
 3037 - 45th Street
 Highland, IN 46322

Fon +1 219 934 90 42
 Fax +1 219 934 90 47
 info@net-usa-inc.com

www.net-usa-inc.com

