

## Full Configuration

Part Numbers:

### MVB-EP-F(XX)-(Y)

- 1 Bitmaxx EP base cable, MDR to MDR
- 1 Bitmaxx EP full cable, MDR to MDR
- 1 Power supply (supplies power to both cables)

### MVB-EPMC-F(XX)-(Y)

- 1 Bitmaxx EP base cable
- HDR (Camera side) to MDR (FG side)
- 1 Bitmaxx EP full cable
- HDR (Camera side) to MDR (FG side)
- 1 Power supply (supplies power to both cables)

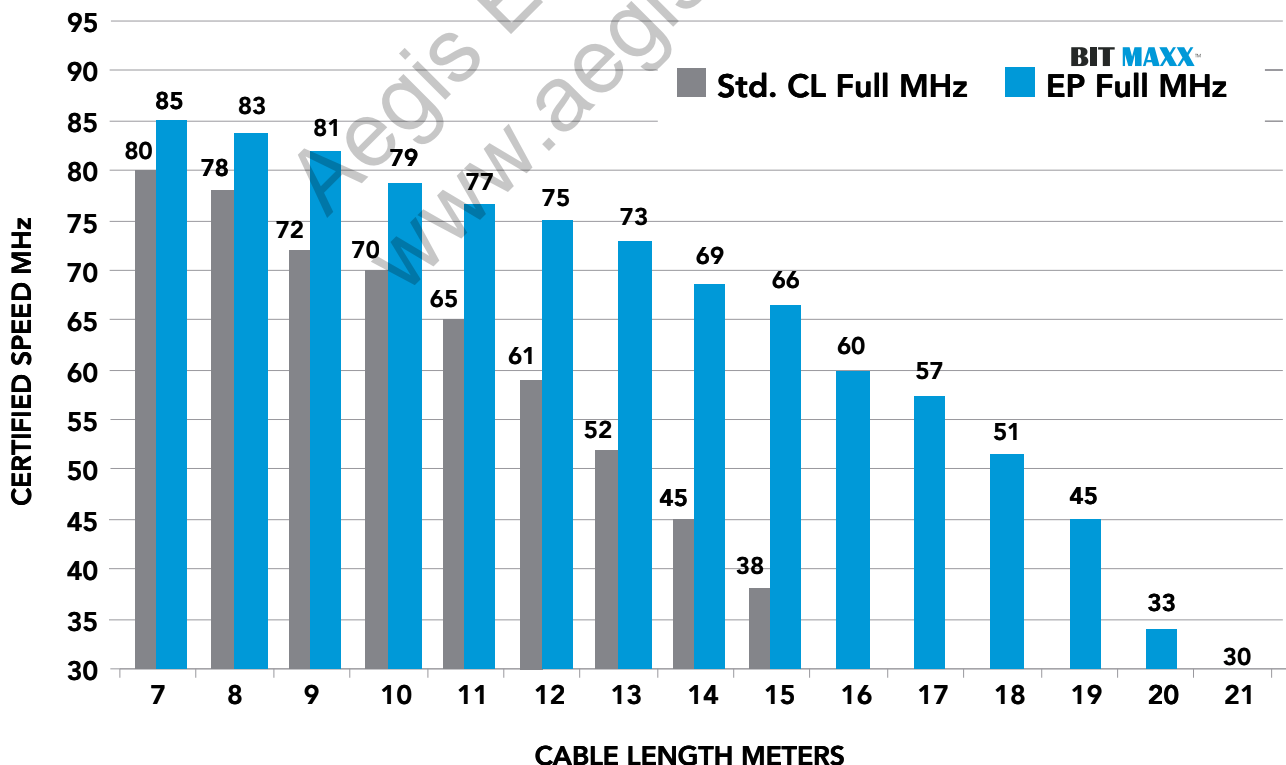
### MVB-EPMF-F(XX)-(Y)

- 1 Bitmaxx EP base cable
- HDR (FG side) to MDR (Camera side)
- 1 Bitmaxx EP full cable
- HDR (FG side) to MDR (Camera side)
- 1 Power supply (supplies power to both cables)

### MVB-EPMM-F(XX)-(Y)

- 1 Bitmaxx EP base cable, HDR to HDR
- 1 Bitmaxx EP full cable, HDR to HDR
- 1 Power supply (supplies power to both cables)

**\*See Performance chart below for Length vs Speed.  
For MDR-MDR configurations only.**





# BITMAXX

## ULTIMATE PERFORMANCE EXTENDED DISTANCE CAMERA LINK MVB-P

Exclusive NEW technology which allows you to extend your Camera Link cable to 25 Meters @ 85MHz without the use of repeaters and their associated hardware!  
A simplified solution. The kit contains the following:

### BASE VERSION

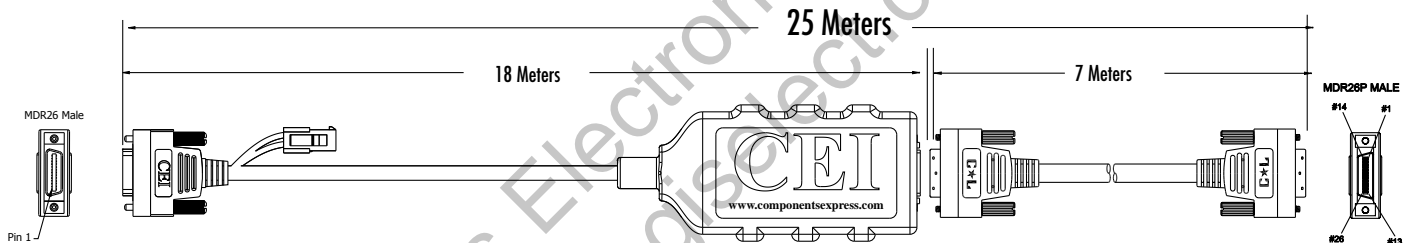
- (1) Power supply: Desktop - Switching type
- (1) 18 Meter CL line conditioner cable HIFLEX design 10,000,000 tick-tock cycles
- (1) 7 Meter CL cable MDR 26P male end HIFLEX design 10,000,000 tick-tock cycles

### FULL VERSION

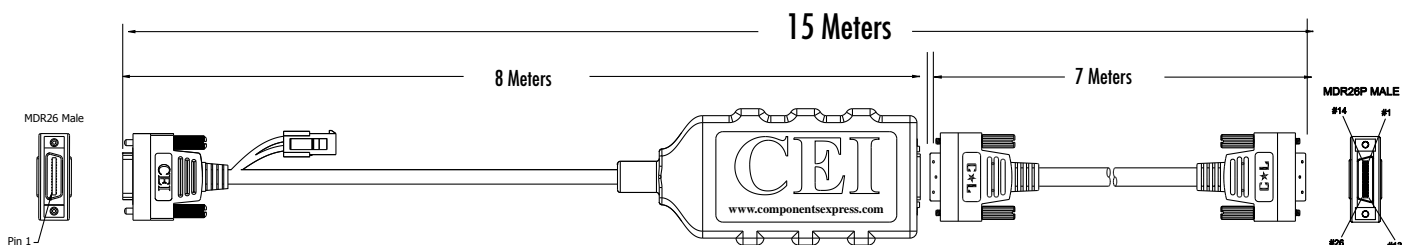
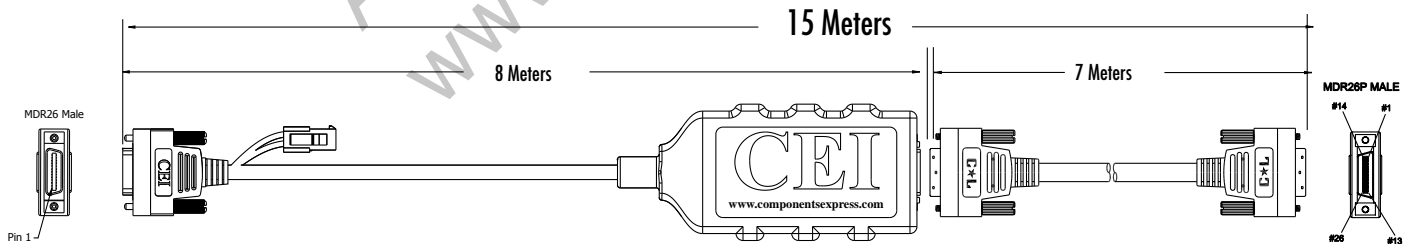
- (2) Power supply: Desktop - Switching type
- (2) 8 Meter CL line conditioner cable HIFLEX design 10,000,000 tick-tock cycles
- (2) 7 Meter CL cable MDR 26P male end HIFLEX design 10,000,000 tick-tock cycles

Input 120V AC cord NOT included.

### BASE VERSION MVB-P-B-18-7



### FULL VERSION MVB-P-F-8-7





# BIT MAXX USB3 VISION

**BIT MAXX™**

## FEATURES:

- Extended distance up to 25 meters
- USB 3.0 Vision systems compatible (only)
- High Flex congurations available
- Cost effective modular design
- EZ install – Plug-N-Play
- Superspeed (5Gbps)
- Improved serviceability
- No external power supply required
- Provides for a variety of exit options @ camera side (sold separately)
- Adaptable to USB Type-B or Micro-B
- Standard 2-year warranty

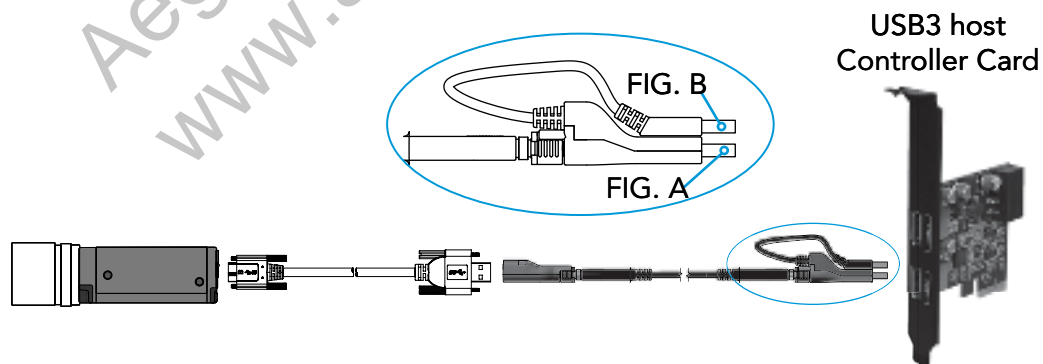
Part Number:  
**MVB-USB3-XX**

## KIT INCLUDES:

- 1 Bitmaxx cable for USB3 Vision
- 1 PCIe USB3 host controller with installation CD and hardware
- 1 USB 3.0 cable 1M, Micro B – Type A, with M2 thumbscrews on each end

## Installation Instructions:

- 1) Install the USB3 host controller card
- 2) Attach cable host end (Fig A) to USB3 host controller port
- 3) Attach pigtail (Fig B) to an adjacent USB2 or USB3 port
- 4) Connect USB3 cable between the device end and the camera
  - Recommended cable length of 1 meter or less
- 5) Your Bitmaxx cable for USB3 Vision is ready for use



## Technical Specifications:

- Output Voltage: 5 VDC
- Output Current: 1.5 A
- Operating Range: -20° C to +80° C
- Minimum Bend Radius: 50mm
- Coaxial Design
- Not compatible with USB 2.0

## System Requirements:

- PCIe Gen2 or later slot for USB3 Host Controller (included)



# INTERNAL CAMERA LINK CABLES

## INTERNAL RIBBON CABLE APPLICATIONS

PART NUMBER REFERENCE **I C L · X · X · X · ( ) M**

### Select Connector Type: End "1"

- MDR Female Straight Exit = 1
- MDR Male Low Profile R/A Exit **UP** = 2
- MDR Male Low Profile R/A Exit **DOWN** = 3
- HDR / SDR Male Low Profile R/A Exit **UP** = 4
- HDR / SDR Male Low Profile R/A Exit **DOWN** = 5
- MDR Male Straight Exit = 6
- HDR / SDR Female R/A **UP** w/Standoffs = 7
- HDR / SDR Female R/A **DOWN** w/Standoffs = 8
- HDR / SDR Male Straight Exit Recessed Screws = 9

### Cable Type Options:

- Pleated Foil Shielded Ribbon = 1

### Select Connector Type: End "2"

- MDR Female Straight Exit = 1
- MDR Male Low Profile R/A Exit **UP** = 2
- MDR Male Low Profile R/A Exit **DOWN** = 3
- HDR / SDR Male Low Profile R/A Exit **UP** = 4
- HDR / SDR Male Low Profile R/A Exit **DOWN** = 5
- MDR Male Straight Exit = 6
- HDR / SDR Female R/A **UP** w/Standoffs = 7
- HDR / SDR Female R/A **DOWN** w/Standoffs = 8
- HDR / SDR Male Straight Exit Recessed Screws = 9

### Physical:

- Cable Color: Gray
- Shell Color: Black
- Shell Construction: Pre-molded in Polyethelene, fully shielded and over-molded in black PVC.
- Cable construction: Utilizes pleated foil shielded ribbon

### Option: Length in Meters

ICL Ribbon Cables are currently available in a standard length of 0.2 to 0.6 meters (8" to 24").  
Call for custom length applications.

# CONNECTOR TYPE OPTIONS:

1

MDR Female  
Straight Exit  
w/Removeable Hardware

2

MDR Male Low  
Profile R/A Exit UP

3

MDR Male Low  
Profile R/A Exit DOWN

4

HDR / SDR Male Low  
Profile R/A Exit UP

5

HDR / SDR Male Low  
Profile R/A Exit DOWN

6

MDR Male  
Straight Exit

7

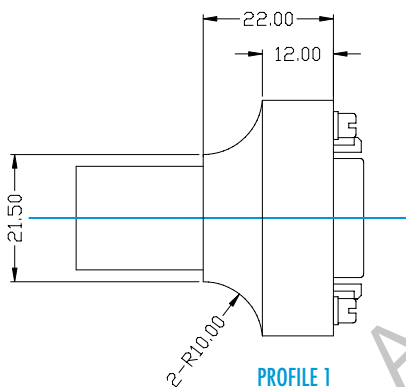
HDR / SDR Female  
R/A UP  
w/Removeable Hardware

8

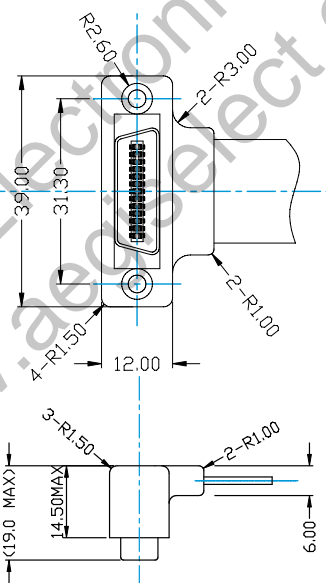
HDR / SDR Female  
R/A DOWN  
w/Removeable Hardware

9

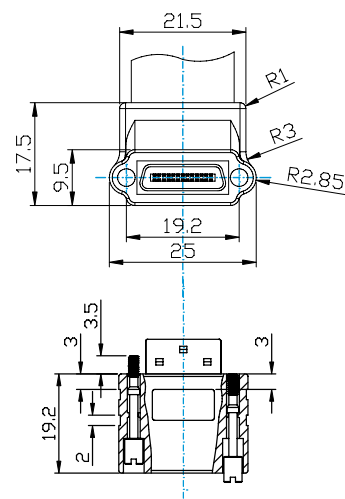
HDR / SDR Male  
Straight Exit  
w/Recessed Screws



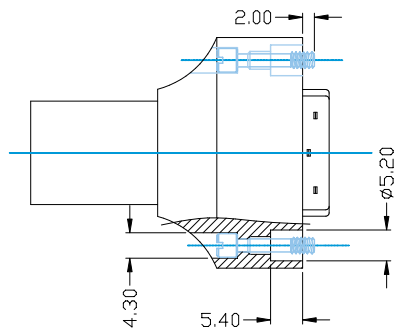
PROFILE 1



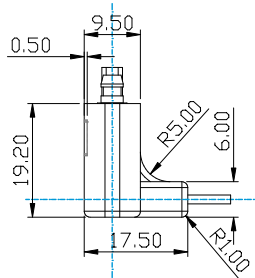
PROFILE 2 & 3



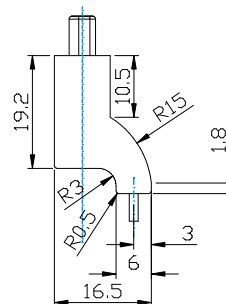
PROFILE 4 & 5



PROFILE 6



PROFILE 7 & 8



PROFILE 9

REV. C



M 1 2

## INDUSTRIAL CABLES

PART NUMBER REFERENCE

**M** | **X** | **X** | **X** | **X** | **( )** | **M**

### Select Connector Type: End "1"

REFER TO GigE PAGE 6 = RJ

- 5P Male = A
- 5P Female = B
- 8P Male = C
- 8P Female = D
- 12P Male = E
- 12P Female = F
- 17P Male = G
- 17P Female = H

### Connector Orientation for Types A-H:

- Straight = 0
- R/A UP = 1
- R/A RIGHT = 3
- R/A DOWN = 5
- R/A LEFT = 7

### Cable Type Options:

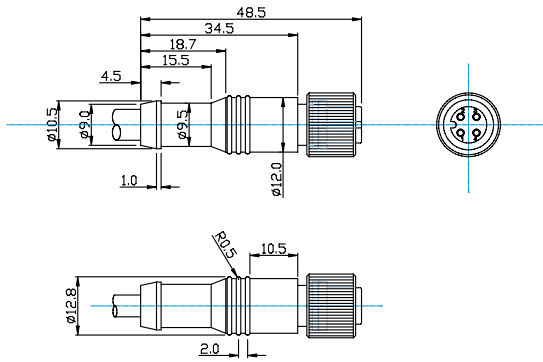
- 28 AWG x 5C = 1
- 28 AWG x 8C = 2
- 24 AWG x 12C = 3
- 28 AWG x 17C = 4
- CAT 6 SSTP G1 = 5

### Select Connector Type: End "2"

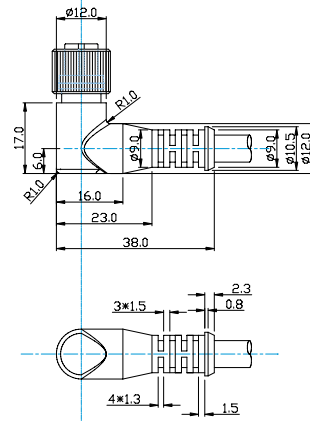
- 5P Male = A
- 5P Female = B
- 8P Male = C
- 8P Female = D
- 12P Male = E
- 12P Female = F
- 17P Male = G
- 17P Female = H
- Flying Leads = X

### Option: Length in Meters

REV. C

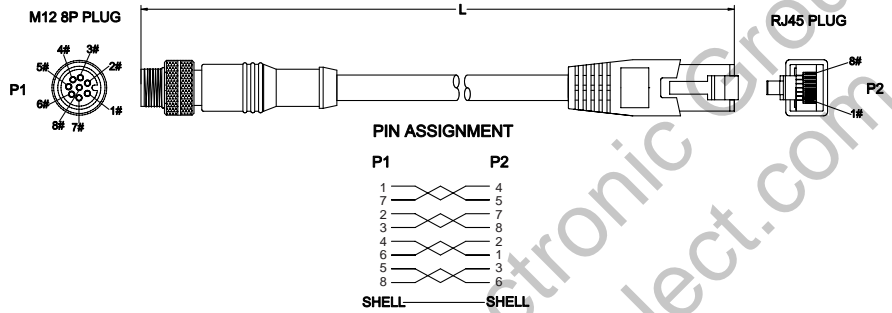


**M12 Straight  
PROFILE**

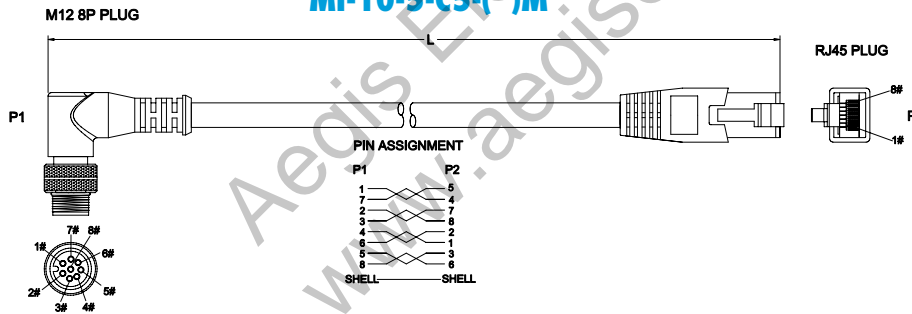


**M12 R/A  
PROFILE**

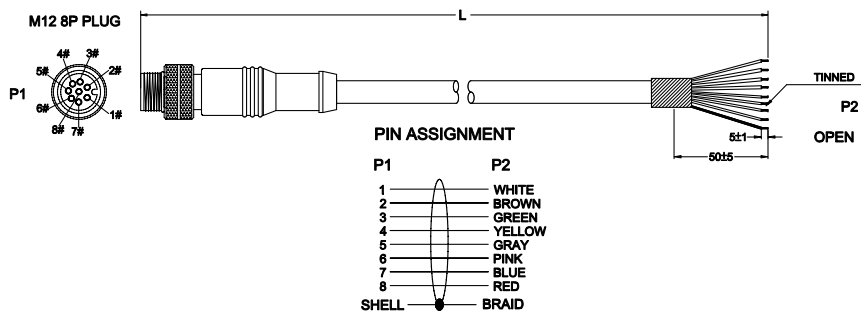
### MI-10-5-C-( )M



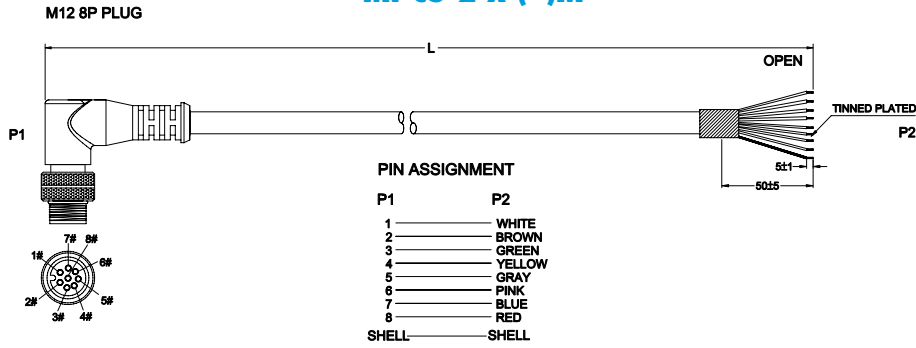
### MI-10-5-C5-( )M



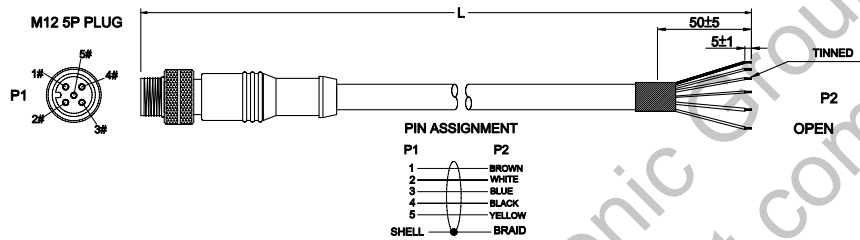
### MI-C-2-X-( )M



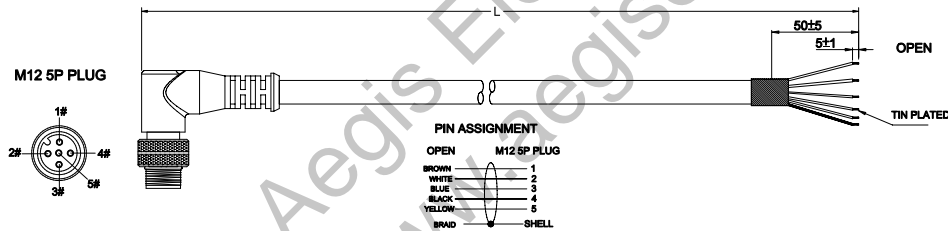
## MI-C5-2-X-( )M



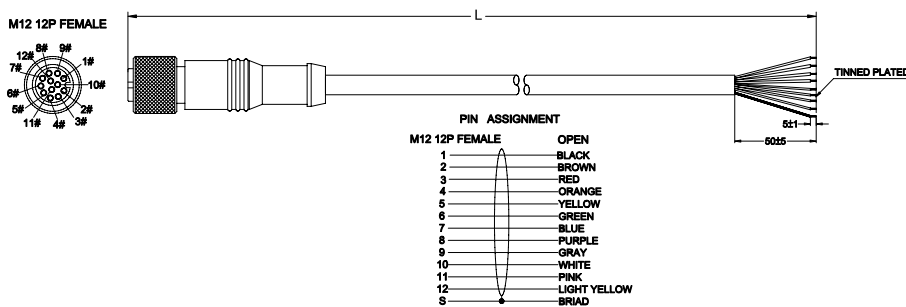
## MI-A0-1-X-( )M



## MI-A5-1-X-( )M



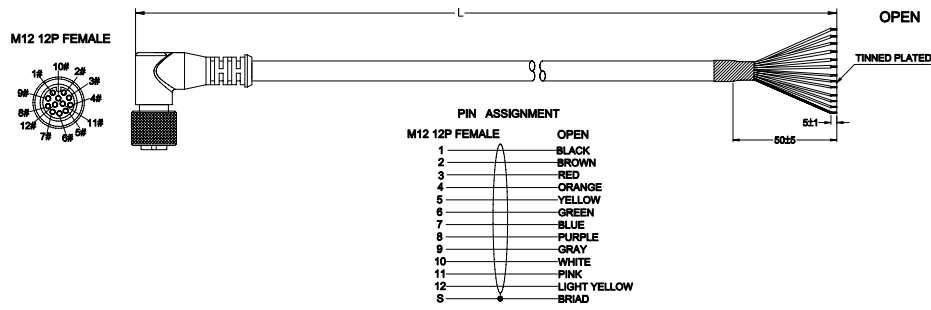
## MI-F0-3-X-( )M



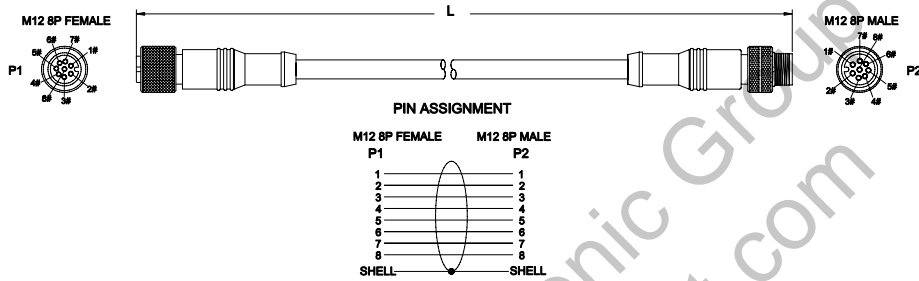
REV. C



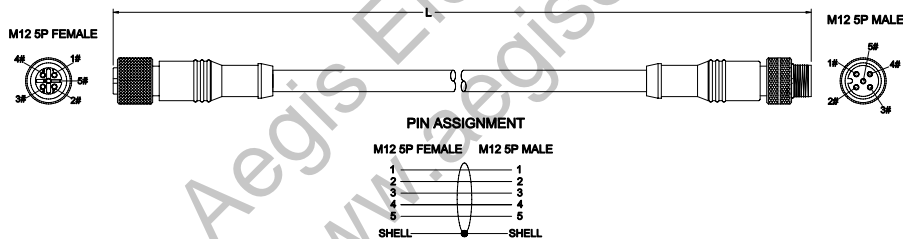
## MI-F5-3-X-( )M



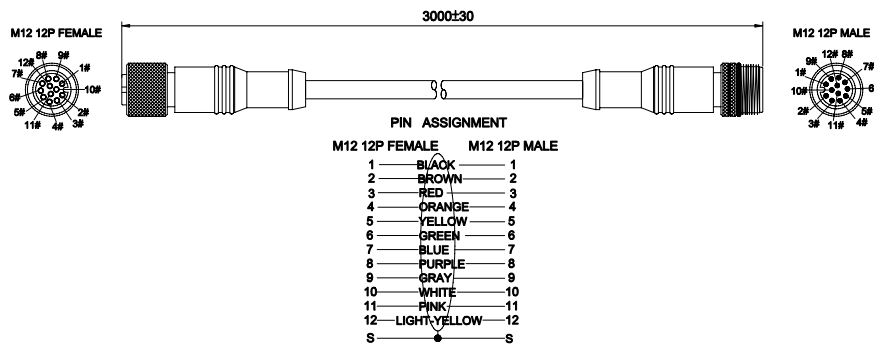
## MI-CO-2-DO-( )M

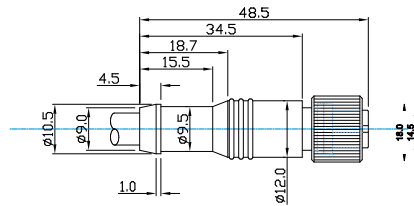


## MI-AO-1-BO-( )M

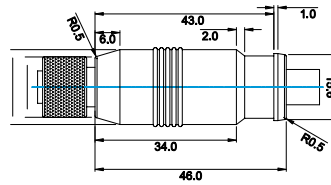


## MI-EO-3-FO-( )M

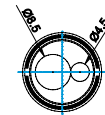




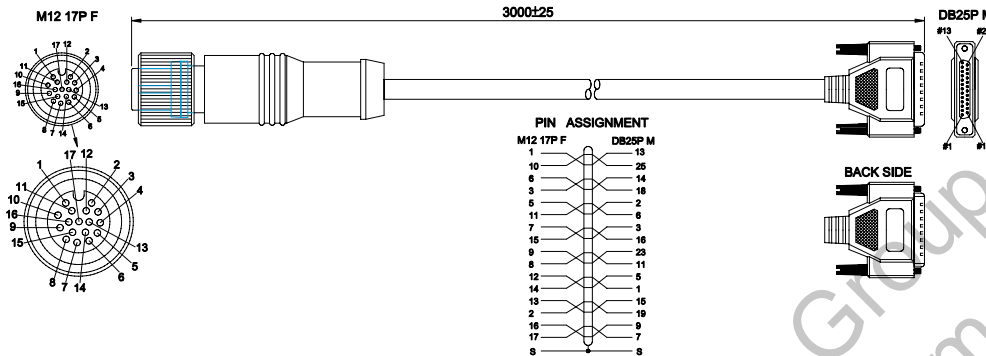
**M12 17 Pin  
PROFILE**



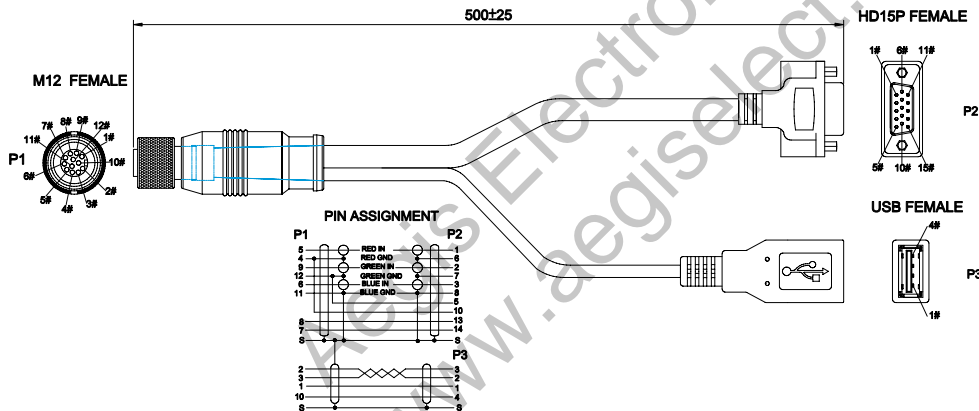
**M12 Y Adaptor  
PROFILE**



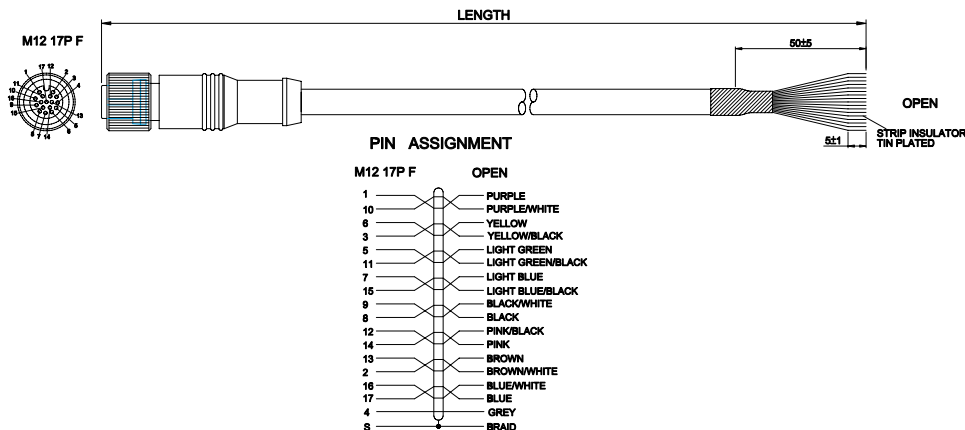
**162290500-( )M • M12 Female 17-Pin - DB25 Male**



**162150500-( )M • M12 Female 12-Pin Custom Y Adaptor - USB & VGA**



**CY-S-0995-( )M • M12 Female 17-Pin to Flying Leads**



REV. C



## uEye CABLES

CY-S-0399-03M  
CY-S-0399-05M

### Description:

R/A Micro-D to  
USB-A plus Trigger

CY-S-0375-03M  
CY-S-0375-05M

### Description:

R/A Micro-D  
to USB-A

CY-S-0467-03M  
CY-S-0467-05M

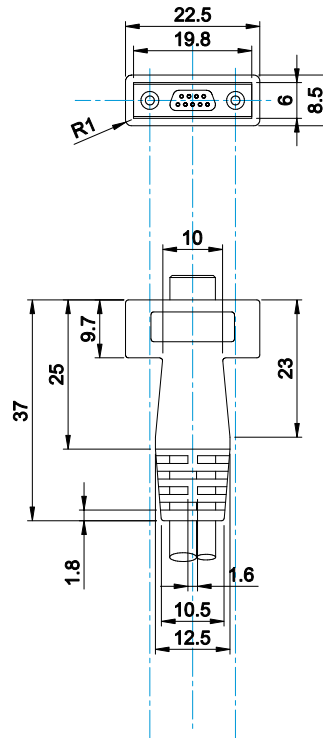
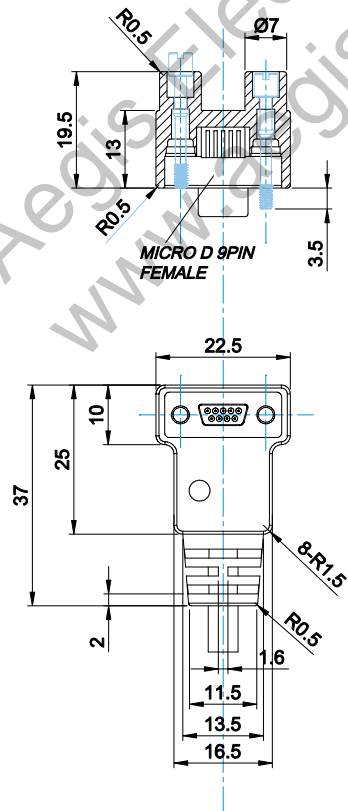
### Description:

Straight Micro-D to  
USB-A plus Trigger

CY-S-0466-03M  
CY-S-0466-05M

### Description:

Straight Micro-D  
to USB-A





# USB 2.0 CABLES

Universal Serial Bus with increased data transfer of 480 Mbps available in various configurations.

PART NUMBER REFERENCE **U S B 2 - 1 - X - X - ( ) M**

USB-A Connector Type: End "1"

Cable Type Options:

HI FLEX = 1

ROBOTIC = 2

Select Connector Type: End "2"

USB-A = 1

USB-B = 2

USB-B w/Screws = 3

Mini USB-B = 4

Mini USB-B w/Screws = 5

Option: Length in Meters

## CONNECTOR TYPE OPTIONS:

**1**

USB-A

**2**



USB-B

**3**

USB-B  
w/Screws

**4**

Mini USB-B

**5**

Mini USB-B  
w/Screws