



CABLE SOLUTIONS GUIDE

INDUSTRY LEADING PERFORMANCE

VOLUME IV



COAXIAL



CAMERA LINK



FIREWIRE



CAMERA LINK



GIGE



USB 3.0



ANALOG VIDEO

Components Express, Inc. was incorporated in 1992 specializing in datacom and telecom cable assemblies.

In 1998, the company began producing telecom devices.

By 2001, CEI began building specialty cables for the machine vision market place. Today, our high quality in house manufacturing capabilities and cost – effective international manufacturing operations allow us to offer both simple cable assemblies and complex devices used in the machine vision data path.

Dedication to service has been rewarding to CEI and our customers. Today, CEI uses up to 80,000 square feet of flexible manufacturing space and up to 200 employees worldwide. Our services include engineering, R&D, manufacturing, finished goods warehousing and global distribution.

Components Express, Inc. fully recognizes and supports the following: programs, initiatives and policies.

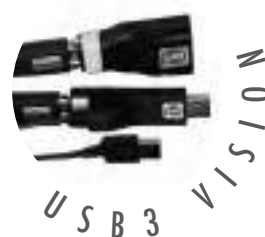
- R.E.A.C.H. Compliant
- GREEN
- DRC / Conflict Free

REV. C

TABLE OF CONTENTS

All cables and power supplies are RoHS compliant

Camera Link	2 - 5
Gigabit Ethernet	6 - 9
Firewire IEEE-1394	10 - 13
Analog Cables	14 - 16
BITMAXX Extended Distance Camera Link MVB-EP	17 - 19
BITMAXX Ultimate Performance Extended Distance Camera Link MVB-P	20
BITMAXX USB3 Vision	21
Internal Camera Link	22 - 23
M12 Industrial Cables	24 - 28
uEye Cables	29
USB 2.0	30 - 31
USB 3.0	32 - 35
Camera Link HS	36 - 37
CoaXPress	38 - 39
Power Supplies for Machine Vision & Custom I/O Breakout Cables	40 - 44





CAMERA LINK MACHINE VISION CABLES

PART NUMBER REFERENCE **M V C - X - X - X - () M**

Select Connector Type: End "1"

MDR Male Straight Exit = 1	MDR Male Exit LEFT w/Recessed Screws = 11
MDR Female Straight Exit = 2	HDR / SDR Female Straight Exit = 12
MDR Male Low Profile R/A Exit UP = 3	MDR Male R/A UP 135° Exit LEFT = 13
MDR Male Low Profile R/A Exit DWN = 4	MDR Male R/A DWN 135° Exit LEFT = 14
HDR / SDR Male Straight Exit = 5	14P HDR / SDR PoCL Lite Straight Exit w/Recessed Screws = 15
HDR / SDR Male R/A Exit UP w/Recessed Screws = 6	MDR Latch Type Straight Exit = 16
HDR / SDR Male R/A Exit DOWN w/Recessed Screws = 7	HDR / SDR Male Exit RIGHT w/Recessed Screws = 17
MDR Male Ext. Profile R/A Exit UP = 8	HDR / SDR Male Exit LEFT w/Recessed Screws = 18
MDR Male Ext. Profile R/A Exit DWN = 9	HDR / SDR Male R/A UP Ext. Profile w/Recessed Screws = 19
MDR Male Exit RIGHT w/Recessed Screws = 10	HDR / SDR Male R/A DWN Ext. Profile w/Recessed Screws = 20

Cable Type Options:

HIFLEX BLACK = 1	30 AWG = 3	PoCL Lite = 5
HIFLEX PoCL = 2	30 AWG PoCL = 4	

Select Connector Type: End "2"

MDR Male Straight Exit = 1	MDR Male Exit LEFT w/Recessed Screws = 11
MDR Female Straight Exit = 2	HDR / SDR Female Straight Exit = 12
MDR Male Low Profile R/A Exit UP = 3	MDR Male R/A UP 135° Exit LEFT = 13
MDR Male Low Profile R/A Exit DWN = 4	MDR Male R/A DWN 135° Exit LEFT = 14
HDR / SDR Male Straight Exit = 5	14P HDR / SDR PoCL Lite Straight Exit w/Recessed Screws = 15
HDR / SDR Male R/A Exit UP w/Recessed Screws = 6	MDR Latch Type Straight Exit = 16
HDR / SDR Male R/A Exit DOWN w/Recessed Screws = 7	HDR / SDR Male Exit RIGHT w/Recessed Screws = 17
MDR Male Ext. Profile R/A Exit UP = 8	HDR / SDR Male Exit LEFT w/Recessed Screws = 18
MDR Male Ext. Profile R/A Exit DWN = 9	HDR / SDR Male R/A UP Ext. Profile w/Recessed Screws = 19
MDR Male Exit RIGHT w/Recessed Screws = 10	HDR / SDR Male R/A DWN Ext. Profile w/Recessed Screws = 20

Option: Length in Meters

Physical:

Cable Color:	Black
Shell Color:	Black
Shell Construction:	Pre-molded in Polyethelene, fully shielded and over-molded in black PVC.
Cable Construction:	Meets Automated Imaging Association Camera Link Standard. Skew-within pair: 35 ps/m max Skew-channel skew per chipset: 50 ps/m max. All cables are Camera Link approved.

REV. C

CONNECTOR TYPE OPTIONS:

1



MDR Male
Straight Exit

2



MDR Female
Straight Exit
w/Removable Hardware

3



MDR Male Low Profile
R/A UP

4



MDR Male Low Profile
R/A DOWN

5



HDR / SDR Male
Straight Exit

6



HDR / SDR Male R/A
Exit UP
w/Recessed Screws

7



HDR / SDR Male R/A
Exit DOWN
w/Recessed Screws

8



MDR Male Ext. Profile
R/A Exit UP

9



MDR Male Ext. Profile
R/A Exit DOWN

10



MDR Male
Exit RIGHT
w/Recessed Screws

11



MDR Male
Exit LEFT
w/Recessed Screws

12 *



HDR / SDR Female
Straight Exit

13



MDR Male R/A UP 135°
Exit LEFT

14



MDR Male R/A DOWN 135°
Exit LEFT

15 **



14P HDR / SDR PoCL Lite
Straight Exit
w/Recessed Screws

16 *



MDR Latch Type
Straight Exit
Diecast

17



HDR / SDR Male
Exit RIGHT
w/Recessed Screws

18



HDR / SDR Male
Exit LEFT
w/Recessed Screws

19



HDR / SDR Male R/A UP
Ext. Profile
w/Recessed Screws

20



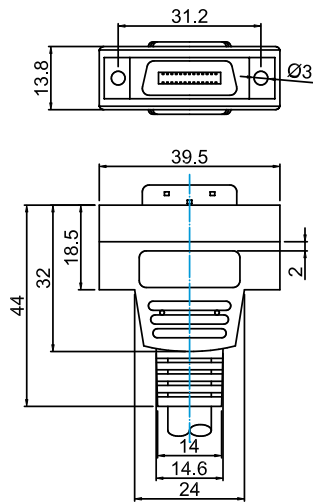
HDR / SDR Male R/A DOWN
Ext. Profile
w/Recessed Screws

* Connector #12 & 16 are ONLY compatible with cable types 3 & 4.

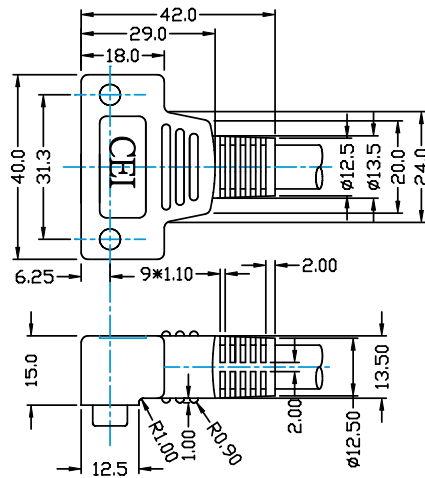
** Cable type 5 is ONLY compatible with connector #15.

See pages 4 – 5 for profile drawings.

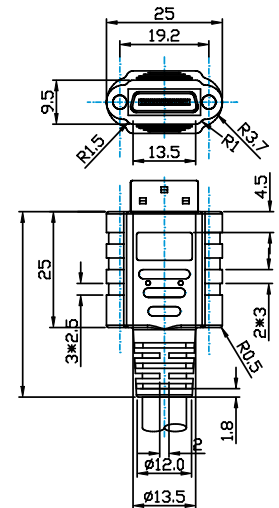
REV. C



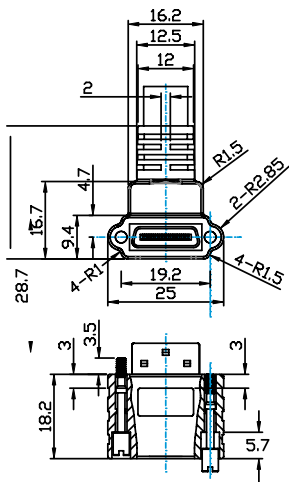
PROFILES 1 & 2



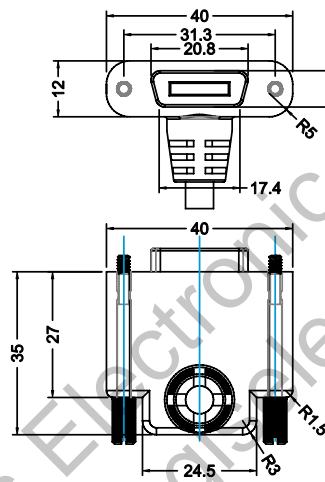
PROFILES 3 & 4



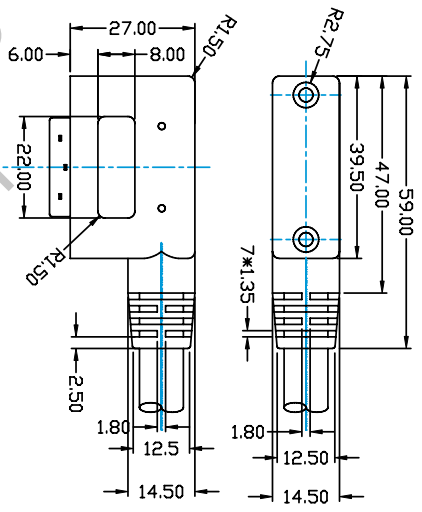
PROFILE 5



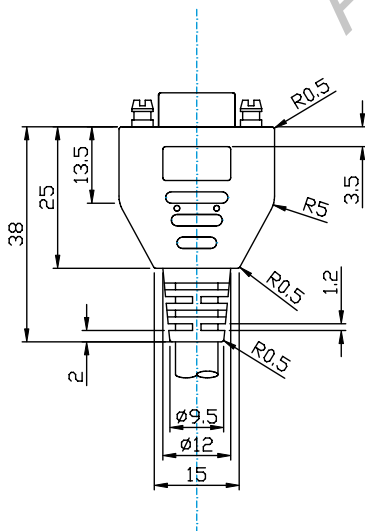
PROFILES 6 & 7



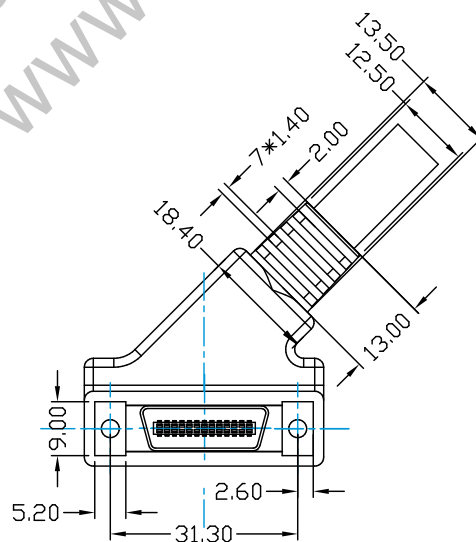
PROFILES 8 & 9



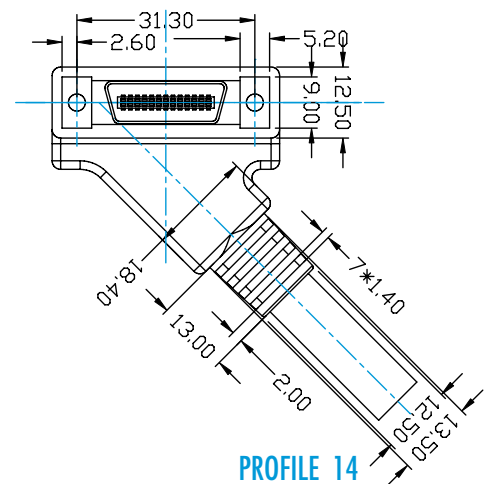
PROFILES 10 & 11



PROFILE 12

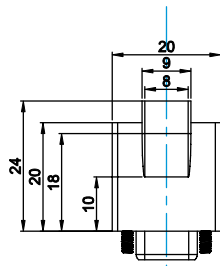


PROFILE 13

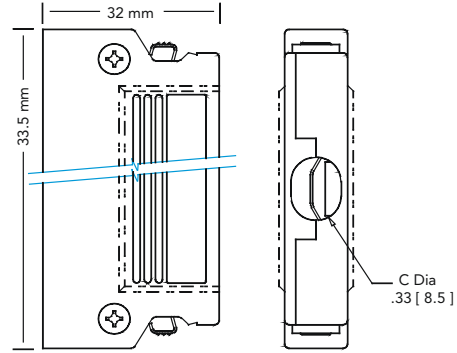


PROFILE 14

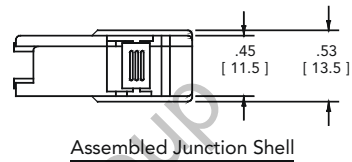
REV. C



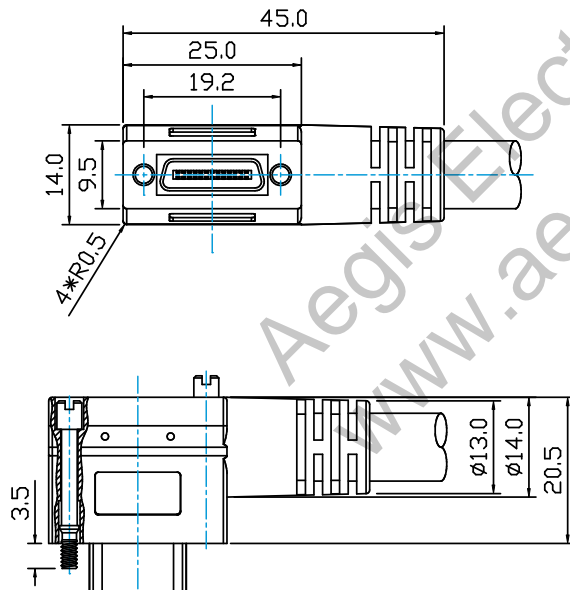
PROFILE 15



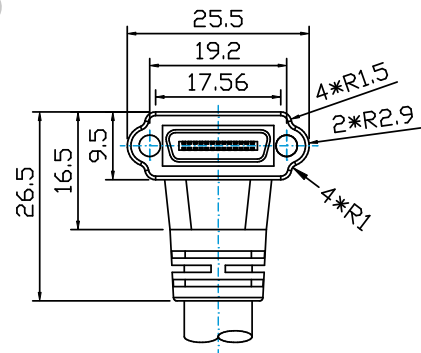
PROFILE 16



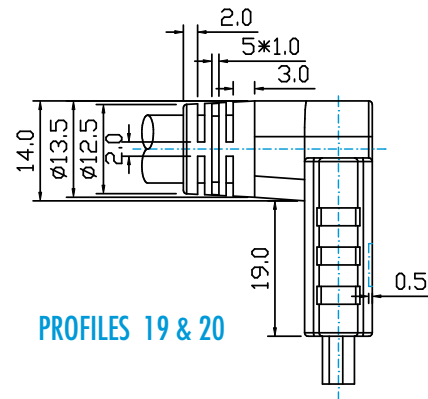
Assembled Junction Shell



PROFILES 17 & 18



PROFILES 19 & 20





GIGABIT ETHERNET CABLES FOR USE IN GigE VISION™ APPLICATIONS

PART NUMBER REFERENCE **M X X X X () M**

Select Profile Type:

*Standard Dimension Type: 99 = V

*Extended Dimension Type: 116 = A

Select Connector Type: End "1"

- | | |
|---|--|
| RJ45 Straight = 1 | Horizontal R/A Up w/Thumbscrews = 7 |
| RJ45 Vertical w/Thumbscrews = 2 | Horizontal R/A Down w/Thumbscrews = 8 |
| RJ45 Horizontal w/Thumbscrews = 3 | RJ45 Vertical RIGHT Exit w/Thumbscrews = 9 |
| RJ45 Straight Industrial IP67 = 4 | RJ45 Vertical LEFT Exit w/Thumbscrews = 10 |
| RJ45 R/A DOWN w/Clip = 5 | RJ45 Horizontal RIGHT Exit w/Recessed Screws = 11 |
| RJ45 Vertical R/A DOWN w/Recessed Screws = 6 | RJ45 Horizontal LEFT Exit w/Recessed Screws = 12 |
| | M12 X-Coded 10Gig = 13 |

Cable Type Options:

- | | |
|--|------------------------------|
| SSTP (CAT 6) = 1 * | C-Track Cable (CAT 5e) = 4 * |
| Industrial HIFLEX TIC-TOC (CAT 5e) = 2 * | Robotic (CAT 5e) = 5 * |
| Extended Distance (CAT 6) = 3 | 10Gig (CAT 6a) = 6 * |

Select Connector Type: End "2"

- | | |
|---|--|
| RJ45 Straight = 1 | Horizontal R/A Up w/Thumbscrews = 7 |
| RJ45 Vertical w/Thumbscrews = 2 | Horizontal R/A Down w/Thumbscrews = 8 |
| RJ45 Horizontal w/Thumbscrews = 3 | RJ45 Vertical RIGHT Exit w/Thumbscrews = 9 |
| RJ45 Straight Industrial IP67 = 4 | RJ45 Vertical LEFT Exit w/Thumbscrews = 10 |
| RJ45 R/A DOWN w/Clip = 5 | RJ45 Horizontal RIGHT Exit w/Recessed Screws = 11 |
| RJ45 Vertical R/A DOWN w/Recessed Screws = 6 | RJ45 Horizontal LEFT Exit w/Recessed Screws = 12 |
| | M12 X-Coded 10Gig = 13 |

Option: Length in Meters

- * Cable types 1, 2, 4, 5 & 6 are ONLY suitable up to 60 meters.
- * Cable type 6 is ONLY suitable with configurations that include connector #13.
- * For configurations using connector type: 6, 11, 12, with cable type 2, 4, 5 the rated speed is Cat-5. The rated speed with cable type 1 & 3 is Cat-5e.
- * Connector type #13 is not suitable for connectors 6, 11, 12.

Physical:

- | | |
|---------------------|--|
| Cable Color: | Black |
| Shell Color: | Black |
| Shell Construction: | Pre-molded in Polyethelene, fully shielded and over-molded in black PVC. |
| Cable Construction: | Meets EIA/TIA standards, category performance certified. |

REV. C

CONNECTOR TYPE OPTIONS:



RJ45 Straight



RJ45 Vertical
w/Thumbscrews



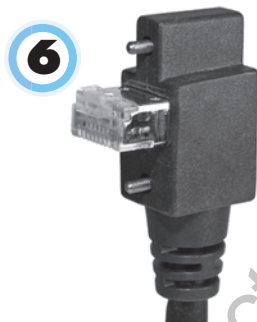
RJ45 Horizontal
w/Thumbscrews



RJ45 Straight
Industrial IP67



RJ45
R/A DOWN w/Clip



RJ45 Vertical
R/A DOWN
w/Recessed Screws



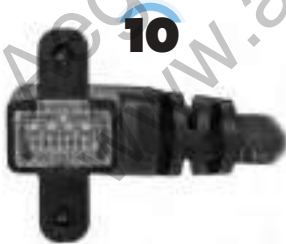
Horizontal R/A UP
w/Thumbscrews



Horizontal R/A DOWN
w/Thumbscrews



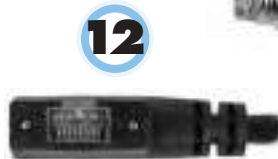
RJ45 Vertical
RIGHT Exit
w/Thumbscrews



RJ45 Vertical
LEFT Exit
w/Thumbscrews



RJ45 Horizontal
RIGHT Exit
w/Recessed Screws



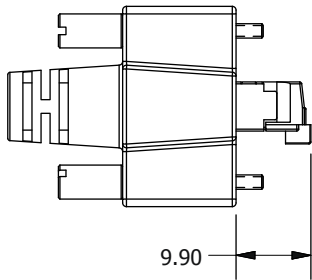
RJ45 Horizontal
LEFT Exit
w/Recessed Screws



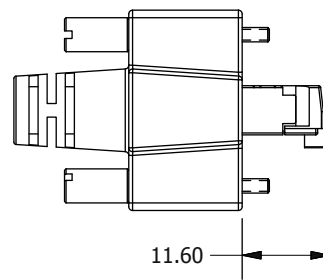
M12 X-Coded
10Gig

See page 8 & 9 for profile drawings.

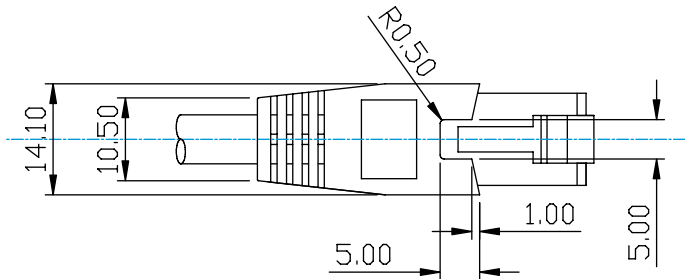
TYPE 99



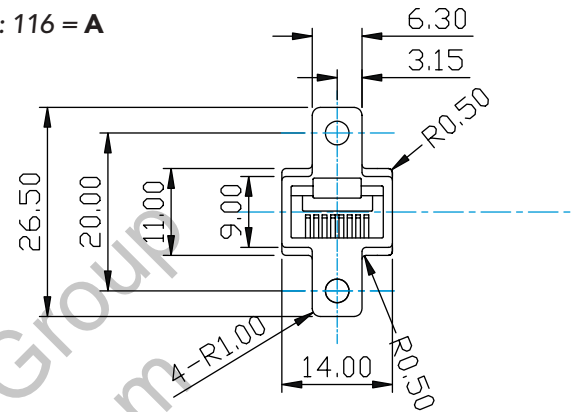
TYPE 116



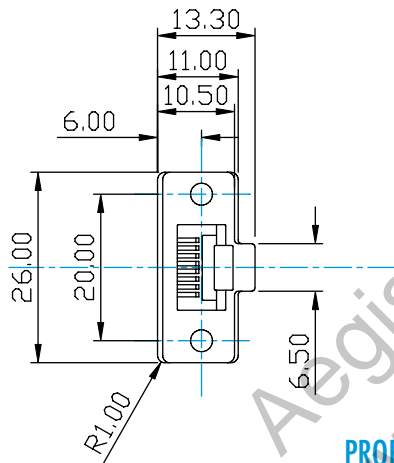
Standard Dimension Type: 99 = V
Extended Dimension Type: 116 = A



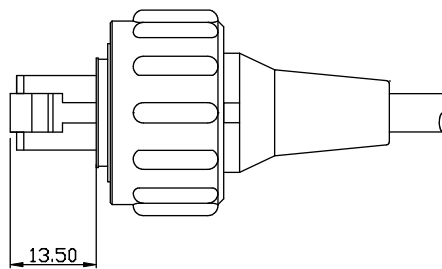
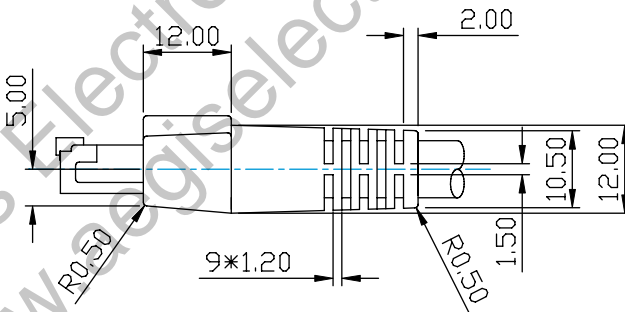
PROFILE 1



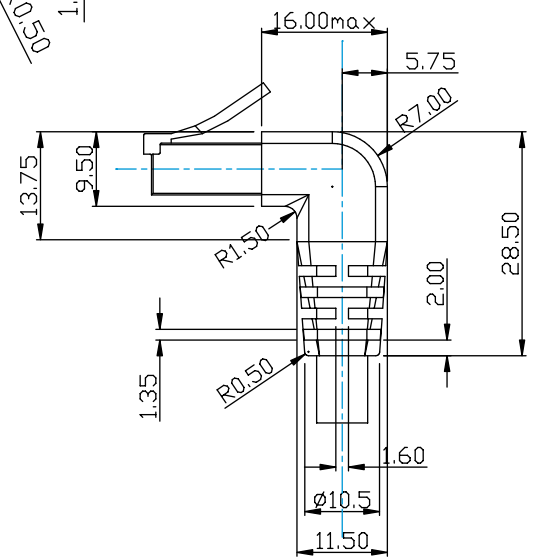
PROFILE 2



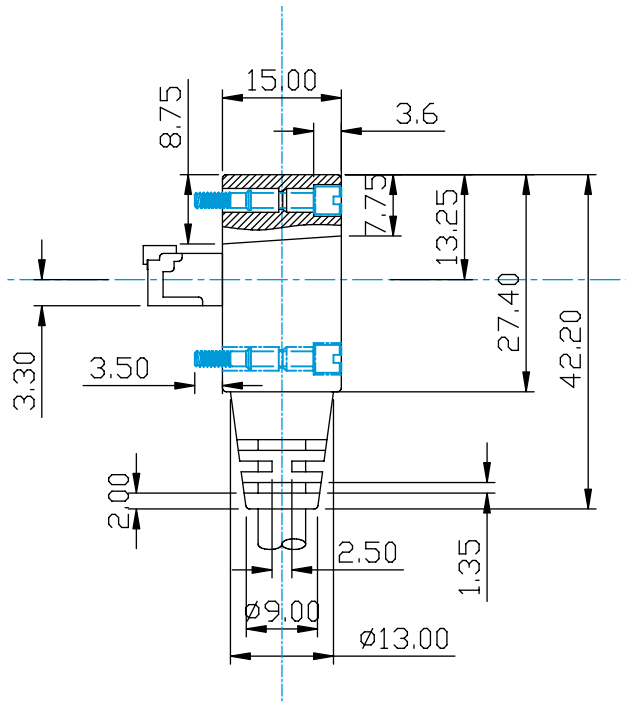
PROFILE 3



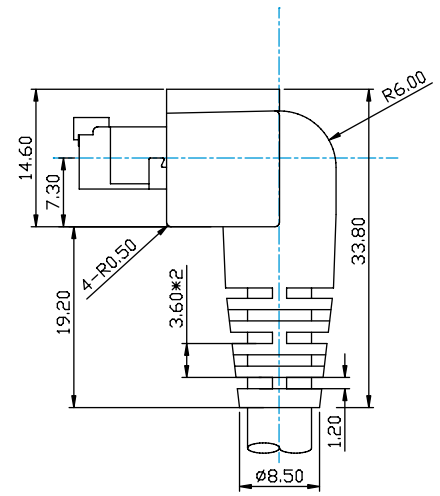
PROFILE 4



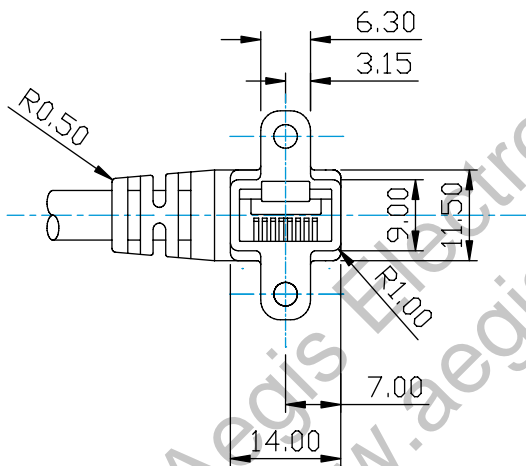
PROFILE 5



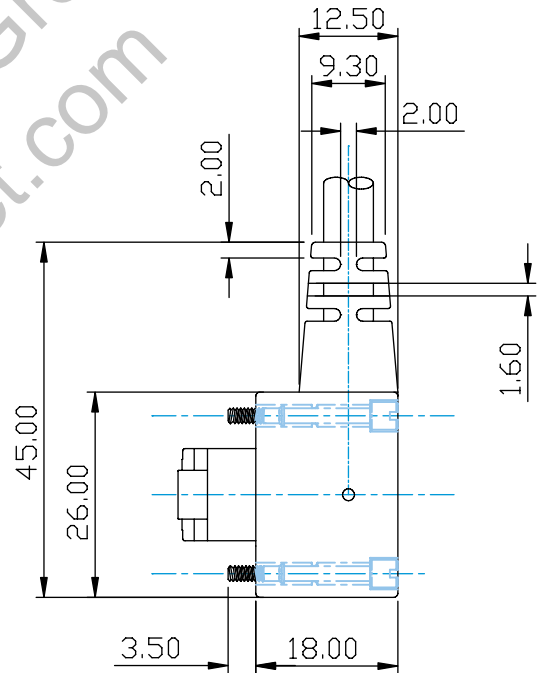
PROFILE 6



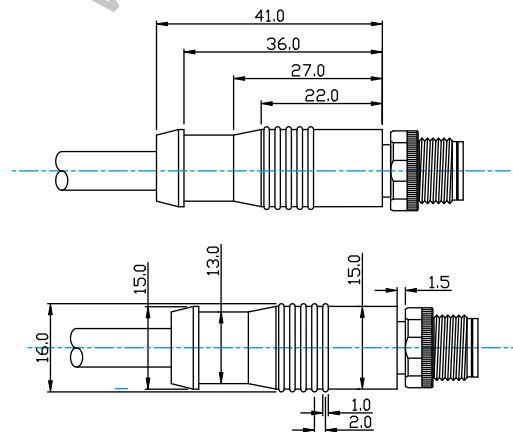
PROFILE 7 & 8



PROFILE 9 & 10



PROFILE 11 & 12



PROFILE 13



FIREWIRE IEEE-1394 CABLES

PART NUMBER REFERENCE **M V F · X · X · X · () M**

Select Connector Type: End "1"

- | | |
|-----------------------------------|--|
| 1394b 9 Pin w/Thumbscrews = 1 | 1394b R/A UP w/Recessed Screws = 11 |
| 1394b 9 Pin Friction Fit = 2 | 1394b R/A DOWN w/Recessed Screws = 12 |
| 1394a 6 Pin w/Thumbscrews = 3 | 1394b 9 Pin Exit RIGHT w/Screw = 13 |
| 1394a 6 Pin Friction Fit = 4 | 1394b 9 Pin Exit LEFT w/Screw = 14 |
| 1394a 6 Pin w/Latches = 5 | 1394a 6 Pin R/A (Cable Exit Pin 1) = 15 |
| 1394b 9 Pin R/A UP = 6 | 1394a 6 Pin R/A (Cable Exit Pin 6) = 16 |
| 1394b 9 Pin R/A DOWN = 7 | 1394a 6 Pin Female = 17 |
| 1394b 9 Pin Exit RIGHT = 8 | 1394a 6 Pin R/A (Cable Exit Pin 1) = 18 |
| 1394b 9 Pin Exit LEFT = 9 | 1394a 6 Pin R/A (Cable Exit Pin 6) = 19 |
| 1394b 9 Pin Female = 10 | |

Cable Type Options:

- Standard Static Cable = 1
- HIFLEX = 2
- Extended Distance = 3
- ROBOTIC = 4 *

Select Connector Type: End "2"

- | | |
|-----------------------------------|--|
| 1394b 9 Pin w/Thumbscrews = 1 | 1394b R/A UP w/Recessed Screws = 11 |
| 1394b 9 Pin Friction Fit = 2 | 1394b R/A DOWN w/Recessed Screws = 12 |
| 1394a 6 Pin w/Thumbscrews = 3 | 1394b 9 Pin Exit RIGHT w/Screw = 13 |
| 1394a 6 Pin Friction Fit = 4 | 1394b 9 Pin Exit LEFT w/Screw = 14 |
| 1394a 6 Pin w/Latches = 5 | 1394a 6 Pin R/A (Cable Exit Pin 1) = 15 |
| 1394b 9 Pin R/A UP = 6 | 1394a 6 Pin R/A (Cable Exit Pin 6) = 16 |
| 1394b 9 Pin R/A DOWN = 7 | 1394a 6 Pin Female = 17 |
| 1394b 9 Pin Exit RIGHT = 8 | 1394a 6 Pin R/A (Cable Exit Pin 1) = 18 |
| 1394b 9 Pin Exit LEFT = 9 | 1394a 6 Pin R/A (Cable Exit Pin 6) = 19 |
| 1394b 9 Pin Female = 10 | |

Option: Length in Meters

Physical:

- * Cable type 1: Suitable up to 4.5M
- * Cable type 2: Suitable up to 8M
- * Cable type 3: Suitable for 6 - 10M
- * Cable type 4: Is Not compatible w/Conn. Type: 5

- Cable Color: Black
- Shell Color: Black
- Shell Construction: Pre-molded in Polyethelene, fully shielded and over-molded in black PVC.
- Cable Construction: Meets industry S-400 and S-800 standards. All cables are fully certified.

REV. C

CONNECTOR TYPE OPTIONS:



1394b 9 Pin
w/Thumbscrews



1394b 9 Pin
Friction Fit



1394a 6 Pin
w/Thumbscrews



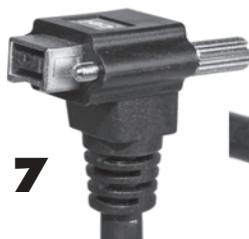
1394a 6 Pin
Friction Fit



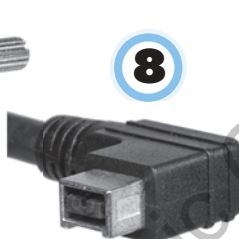
1394a 6 Pin
w/Latches



1394b 9 Pin
R/A UP



1394b 9 Pin
R/A DOWN



1394b 9 Pin
Exit RIGHT
Friction Fit



1394b 9 Pin
Exit LEFT
Friction Fit



1394b 9 Pin
Female
w/Removeable Hardware



1394b R/A UP
w/Recessed Screws



1394b R/A DOWN
w/Recessed Screws



1394b 9 Pin
Exit RIGHT
w/Recessed Screw



1394b 9 Pin
Exit LEFT
w/Recessed Screw



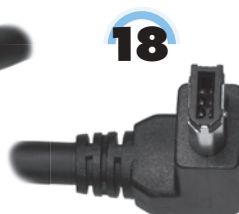
1394a 6 Pin R/A
(Cable Exit Pin 1)
Friction Fit



1394a 6 Pin R/A
(Cable Exit Pin 6)
Friction Fit



1394a 6 Pin
Female
Friction Fit

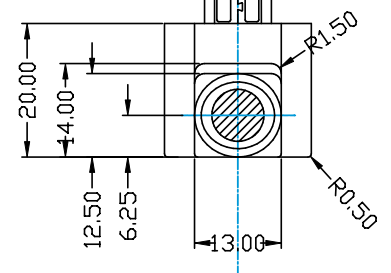
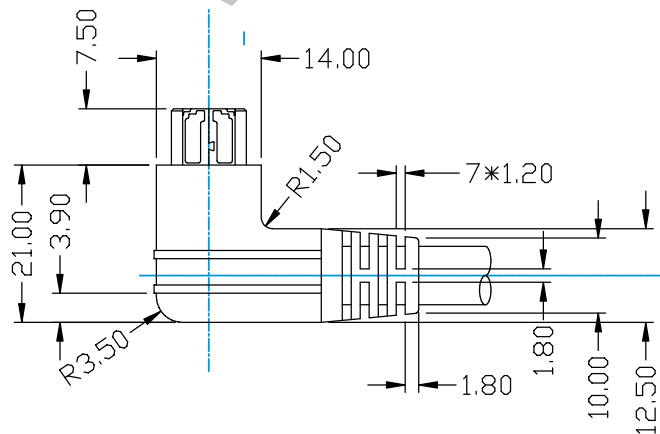
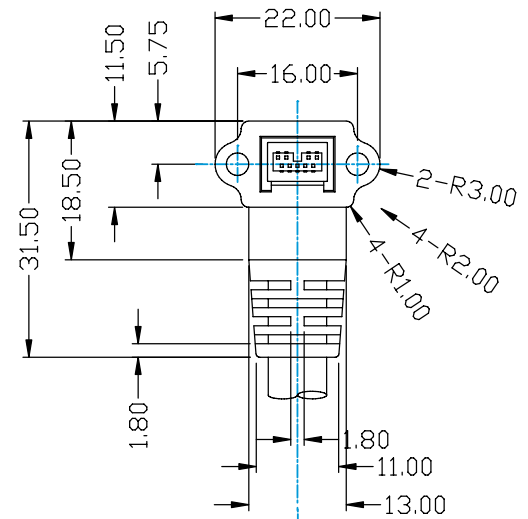
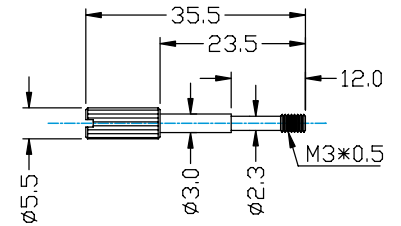
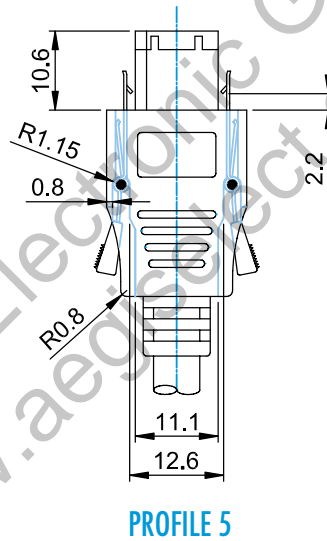
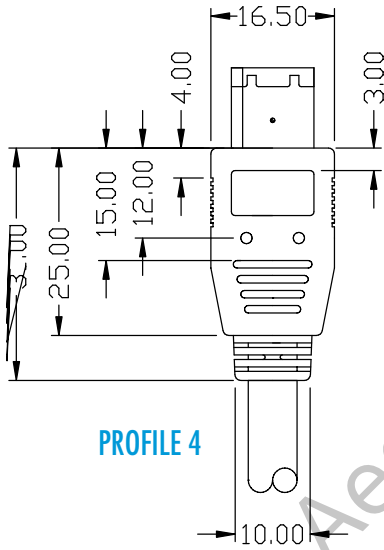
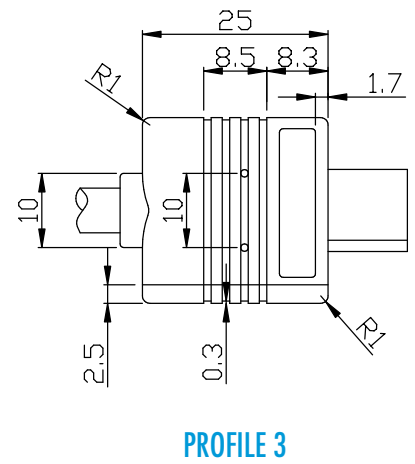
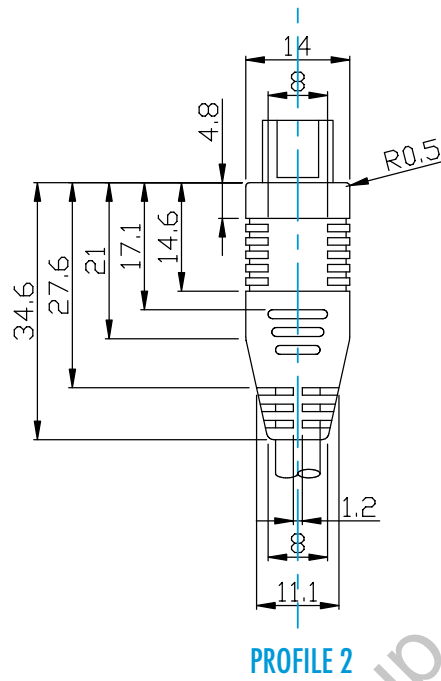
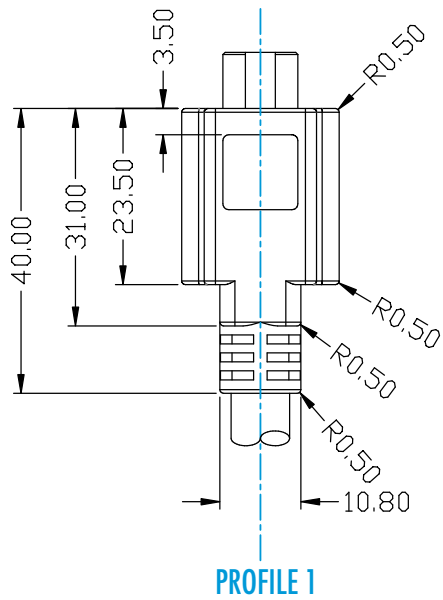


1394a 6 Pin R/A
(Cable exit Pin 1)
Friction Fit

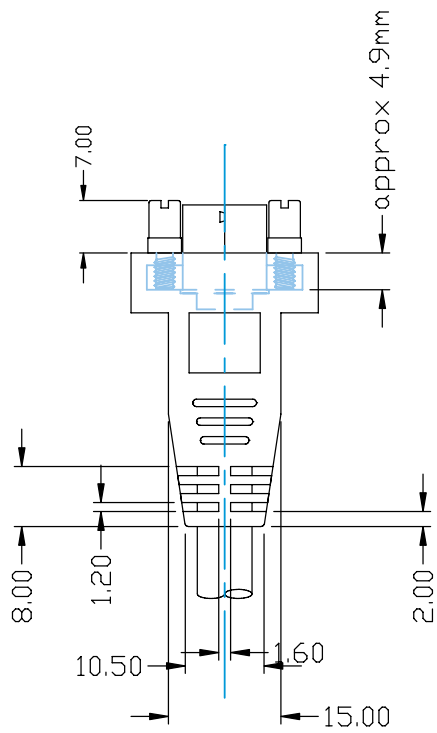


1394a 6 Pin R/A
(Cable Exit Pin 6)
Friction Fit

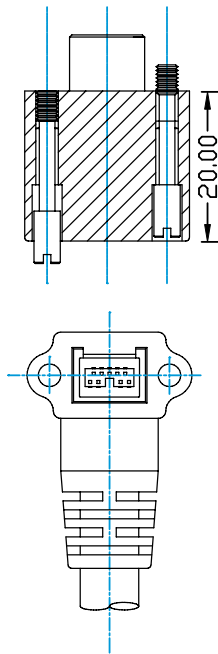
See page 12 & 13 for profile drawings.



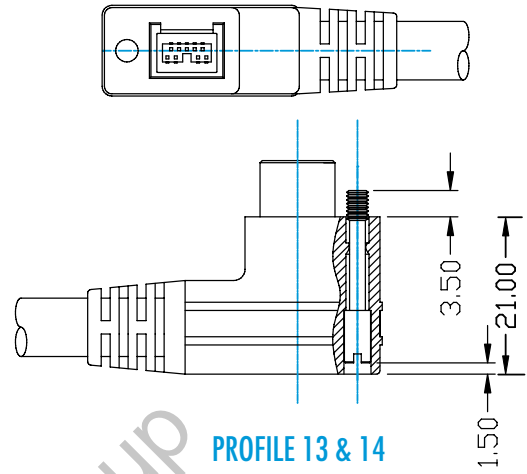
REV. C



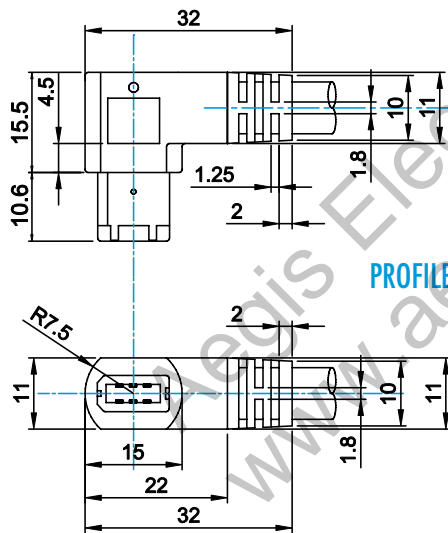
PROFILE 10



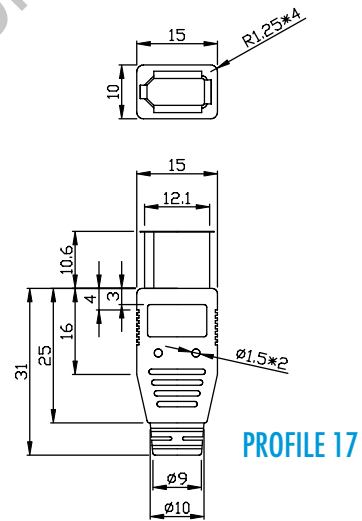
PROFILE 11 & 12



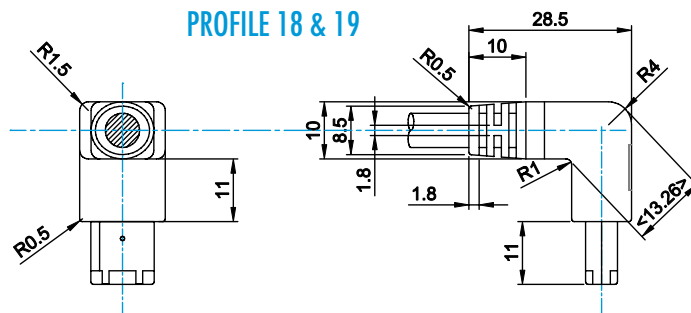
PROFILE 13 & 14



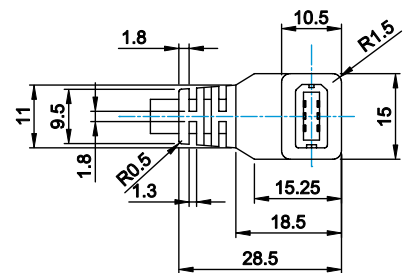
PROFILE 15 & 16



PROFILE 17



PROFILE 18 & 19





ANALOG CABLES

PART NUMBER REFERENCE

M V A - X X X X () M

Select Connector Type: 1-8 End "1"

Gender, Body and Pin Count
(from page 15) End "1"

Connector Orientation:

See example at right

Straight = 0

Right Angle 360° = 1 *

Right Angle 45° = 2 *

Right Angle 90° = 3

Right Angle 135° = 4

Right Angle 180° = 5 *

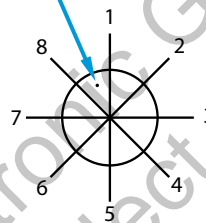
Right Angle 225° = 6 *

Right Angle 270° = 7

Right Angle 315° = 8

* PLEASE NOTE: Right Angle orientations are available for connector types: 1, 2, 5 & 6

Pin #1



Example: Right Angle orientation #3 (90°)



Cable Type Option:

24 AWG x 12C (I/O) = 1 *

ULTRAFLEX (Video) = 2 *

28 AWG x 6C (I/O) = 3 *

26 AWG x 8C (I/O) = 4 *

Select Connector Type: 1-8 End "2"

Gender, Body, and Pin Count
(from page 15) End "2"

X on End "2" denotes flying leads

Option: Length in Meters

- * X End option for step "4" denotes flying leads for cable.
- * Cable type 1 is only for End A types 1-4 going to End B flying leads (X).
- * Cable type 2 is only available for end types 1-4.
- * Customer specified pin-out/color code for flying leads
- * Cable type 3 is only available for end types 5, 6 & Flying Leads.
- * Cable type 4 is only available for end types 7, 8 & Flying Leads.
- * Step 2: Right Angle options 1-8 will only be available for end types 1,2, 5 & 6
- * Connector P/N is for reference only.

Physical:

Cable Color:

Black

Shell Color:

Black

Shell Construction:

Pre-molded in Polyethelene, fully shielded and over-molded in black PVC.

Cable Construction:

Mini coaxial lines plus discrete wires for all standard RGB, HD and VD applications.

CONNECTOR TYPE OPTIONS:

1



12 Pin Female Plug
HR10A-10P-12S*

2



12 Pin Male Plug
HR10A-10P-12P*

3



12 Pin Female Jack
HR10A-10J-12S*

4



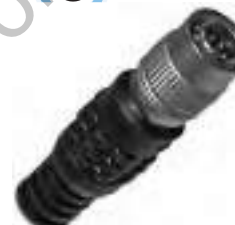
12 Pin Male Jack
HR10A-10J-12P*

5



6 Pin Female Plug
HR10A-7P-6S*

6



6 Pin Male Plug
HR10A-7P-6P*

7



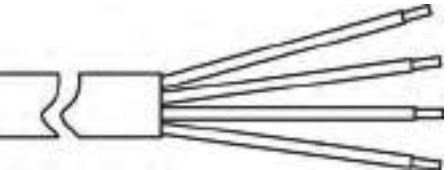
8 Pin Female Plug
HR25-7TP-8S*

8



8 Pin Male Plug
HR25-7TP-8P*

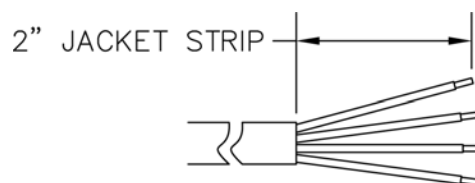
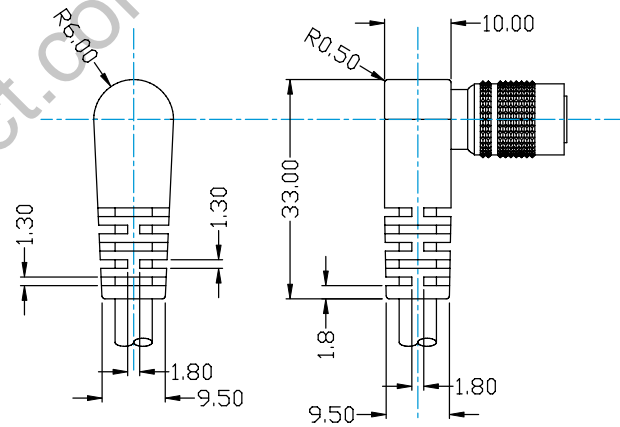
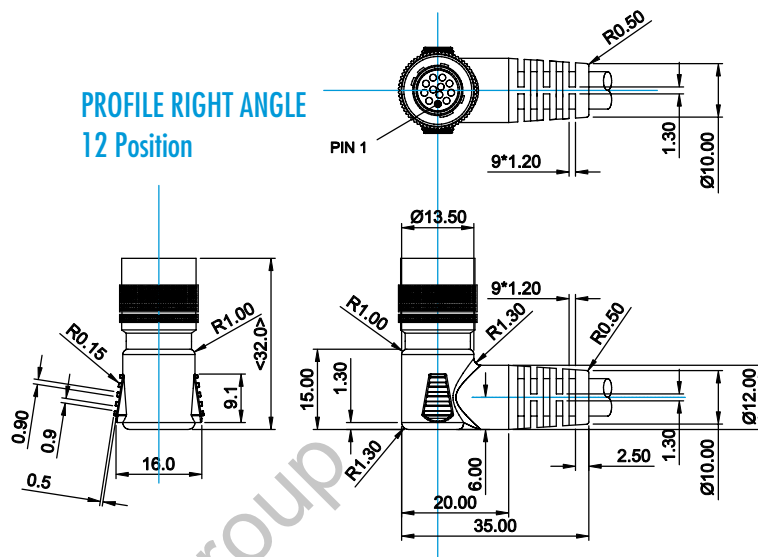
X



Flying Leads
for End "2"

* Connector P/N is for reference only.

See page 16 for profile drawings.



PROFILE X



BIT MAXX

EXTENDED DISTANCE CAMERA LINK CABLES MVB-EP

CEI's exclusive Bitmaxx technology utilizes Pre-Emphasis and Equalization in order to extend the distance of Camera Link Cables.

Technology:

Equalization is an analog technique to reverse the low pass effect of the cable with a high pass filter to recover and restore the original signal.

Pre-Emphasis is a unique signal improving technique that opens the eye pattern at the far end of the cable for point to point applications. Pre-Emphasis adds additional output current during the transition time of the bit.

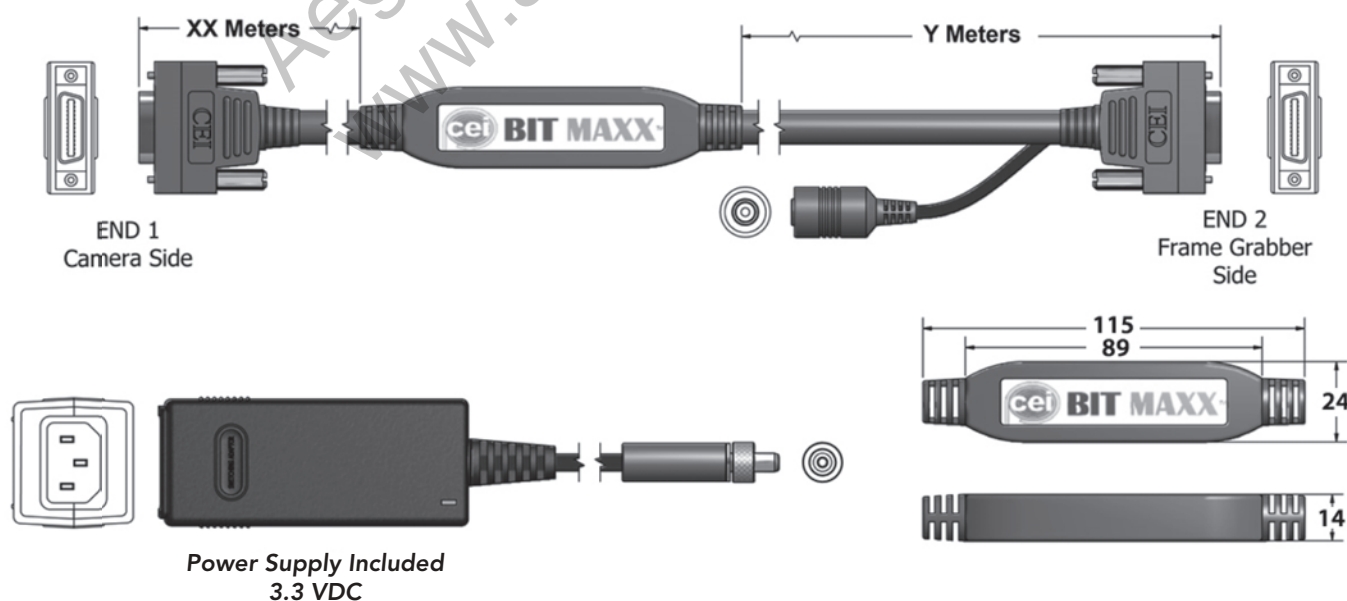
Benefits:

- Double your cable distance
- Fraction of the cost of repeaters
- High-flex cable construction
- Compact, low profile solution
- PoCL compatible
- Base and Full configurations available

BIT MAXX™

Physical Dimensions:

Units = mm





Base Configuration

Part Numbers:

MVB-EP-B-(XX)-(Y)

1 Bitmaxx EP base cable, MDR to MDR
1 Power supply (Does NOT include cord)

MVB-EPMC-B-(XX)-(Y)

1 Bitmaxx EP base cable
HDR (Camera side) to MDR (FG side)
1 Power supply (Does NOT include cord)

MVB-EPMF-B-(XX)-(Y)

1 Bitmaxx EP base cable
HDR (FG side) to MDR (Camera side)
1 Power supply (Does NOT include cord)

MVB-EPMM-B-(XX)-(Y)

1 Bitmaxx EP base cable, HDR to HDR
1 Power supply (Does NOT include cord)

***See Performance chart below for Length vs Speed.
For MDR-MDR configurations only.**

